



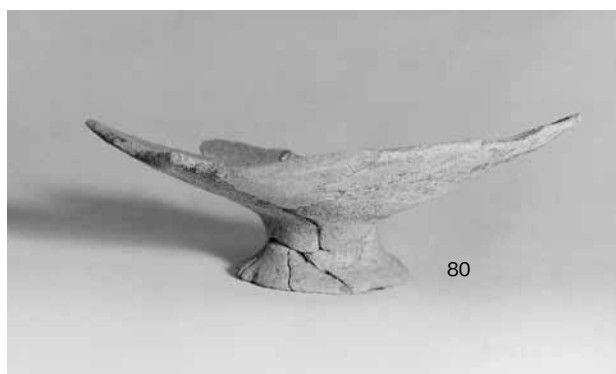
50



84



85



80



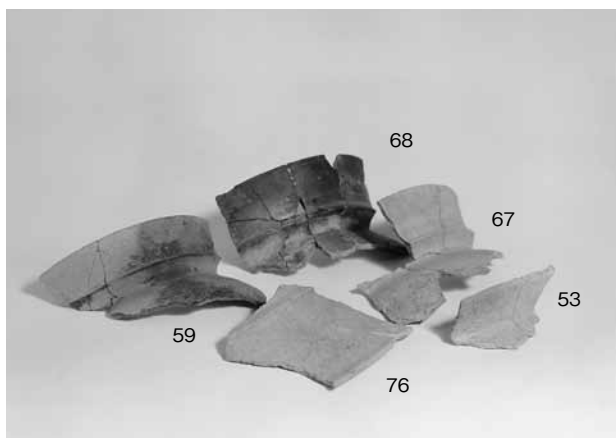
71



77



72



68

67

53

59

76

弥生土器・土師器



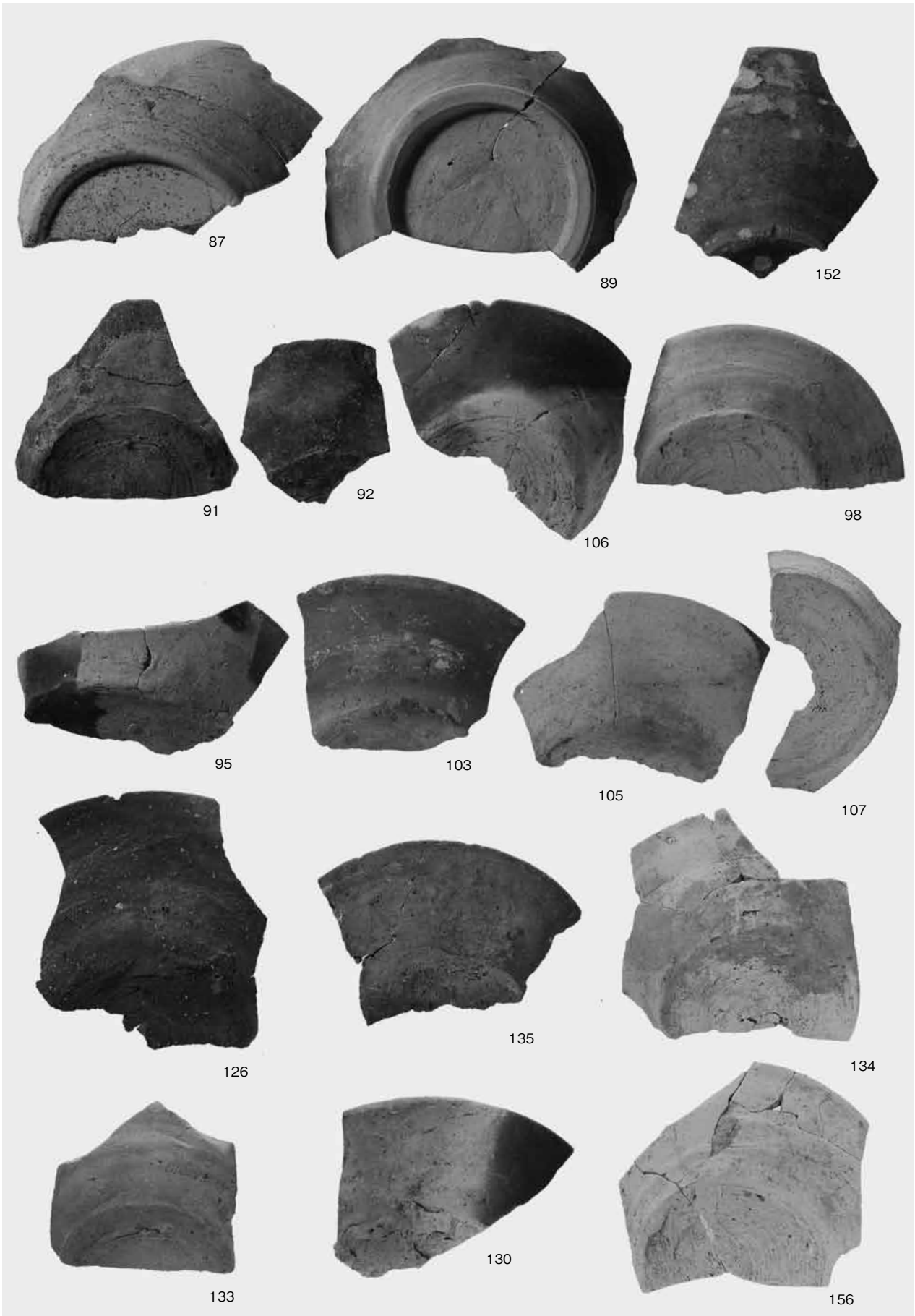
窯2出土須恵器・瓦



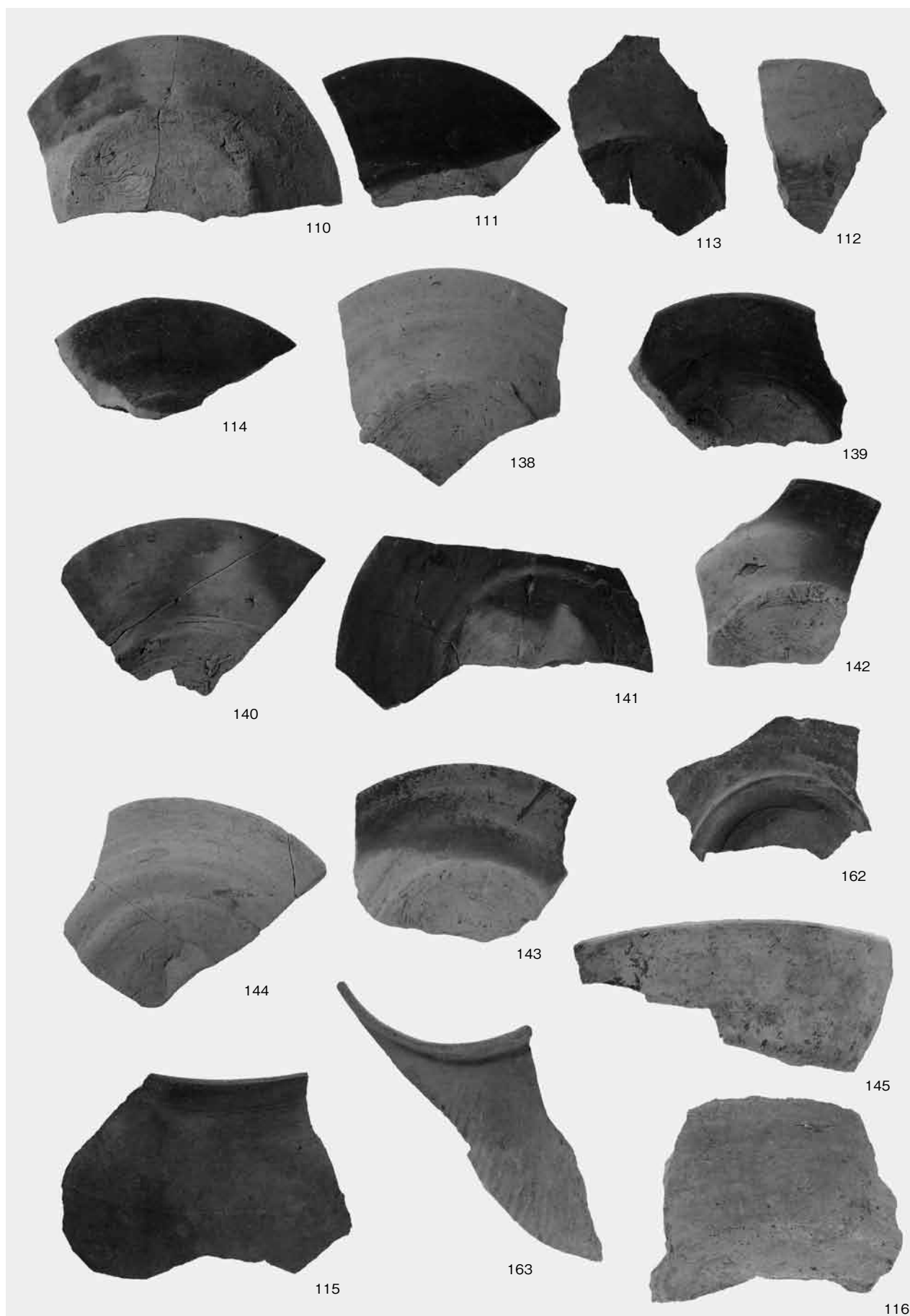
1 窯1出土須恵器・瓦



2 窯3出土須恵器



窯 1 出土須惠器杯類



窯 1 出土須惠器皿類他



窯 1 (古段階) 出土須惠器杯類



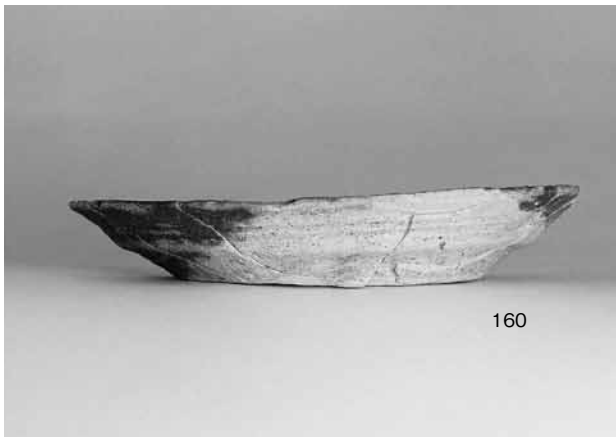
1 窯1 (古段階) 出土須恵器杯・皿



2 窯1 (新段階) 出土須恵器杯類(1)

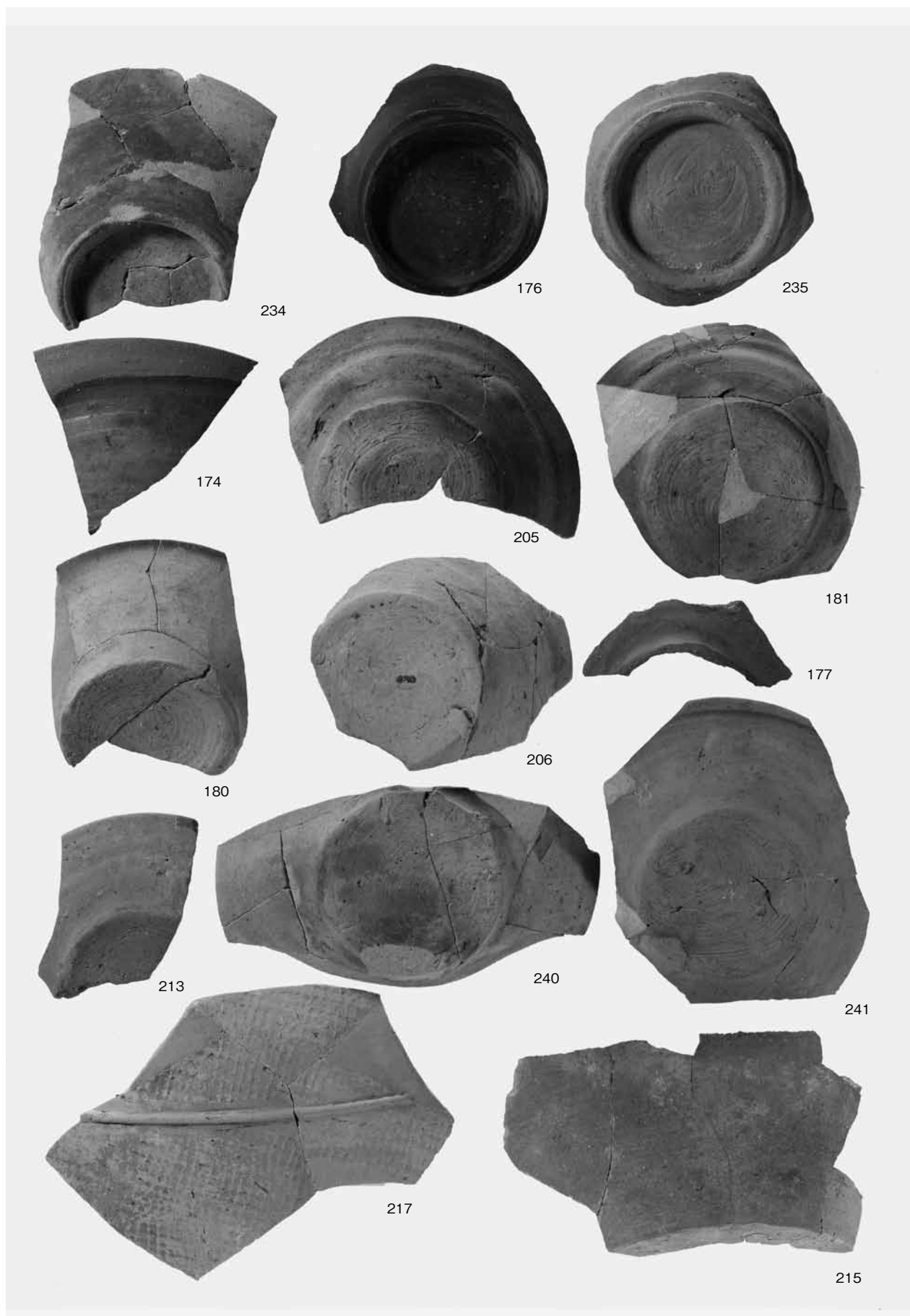


1 窯 1 (新段階) 出土須恵器杯類 (2)



2 窯 1 上層出土須恵器皿・窯 2 (古段階) 出土須恵器杯類





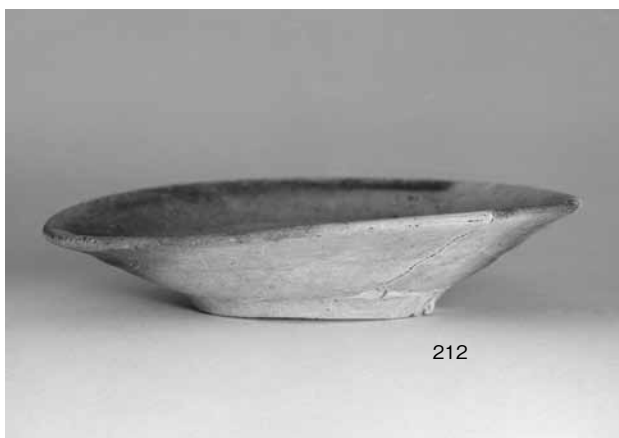
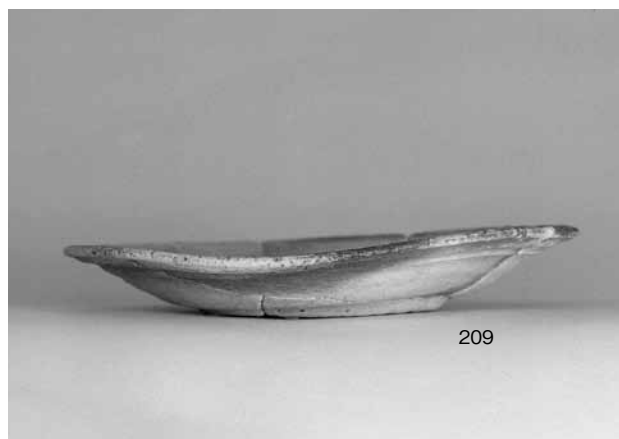
窯2出土須恵器



窯2 (古段階) 出土須恵器杯 (1)



窯2 (古段階) 出土須惠器杯 (2)



窯 2 (古段階) 出土須恵器杯・皿・小壺



窯2 (古段階) 出土須恵器壺・甕



窯2(新段階)・窯2埋戻し土出土須恵器杯皿類



1 窯2埋戻し土、窯3第1段階・第2段階出土須恵器

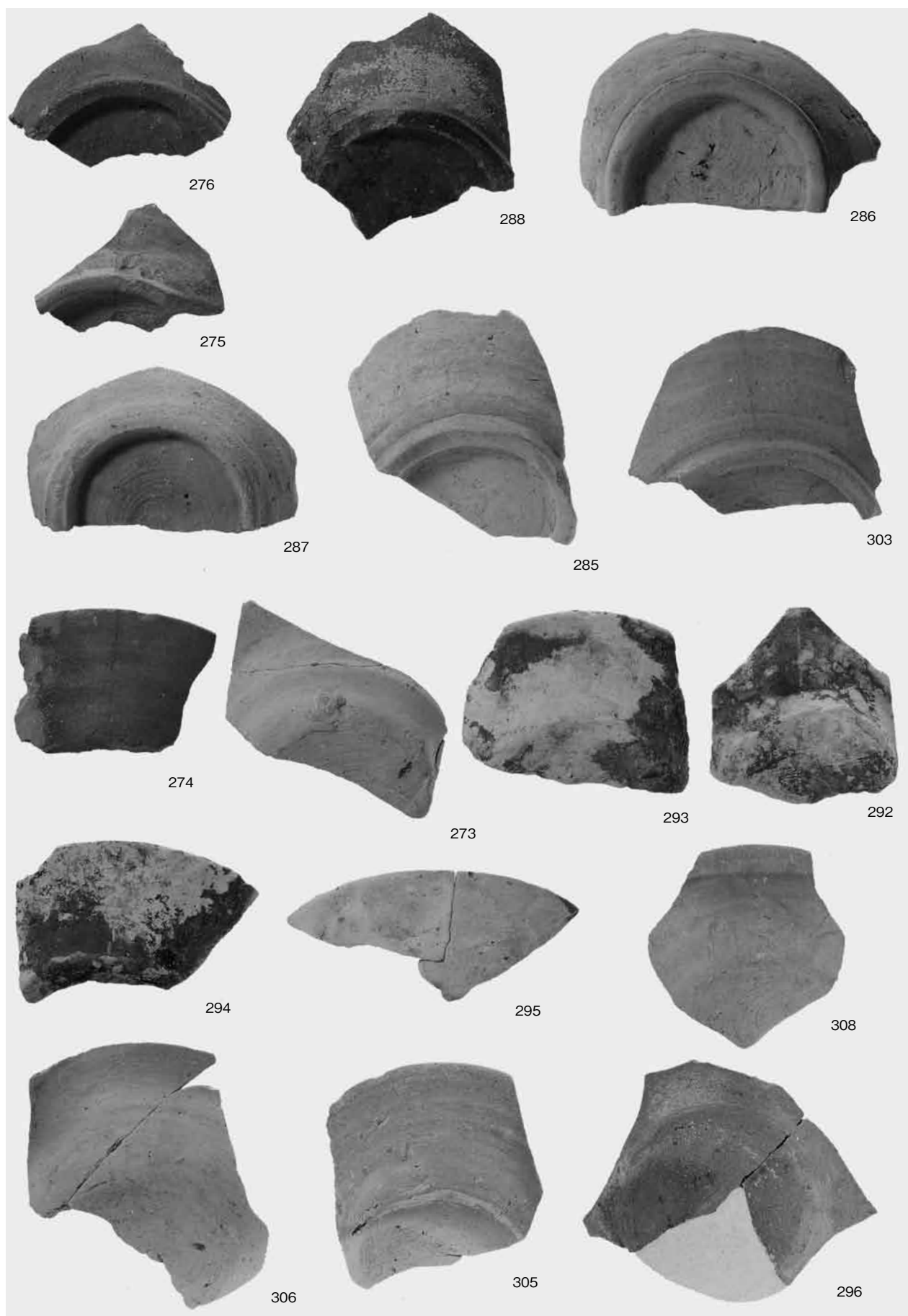


2 窯3第3段階出土須恵器高台杯

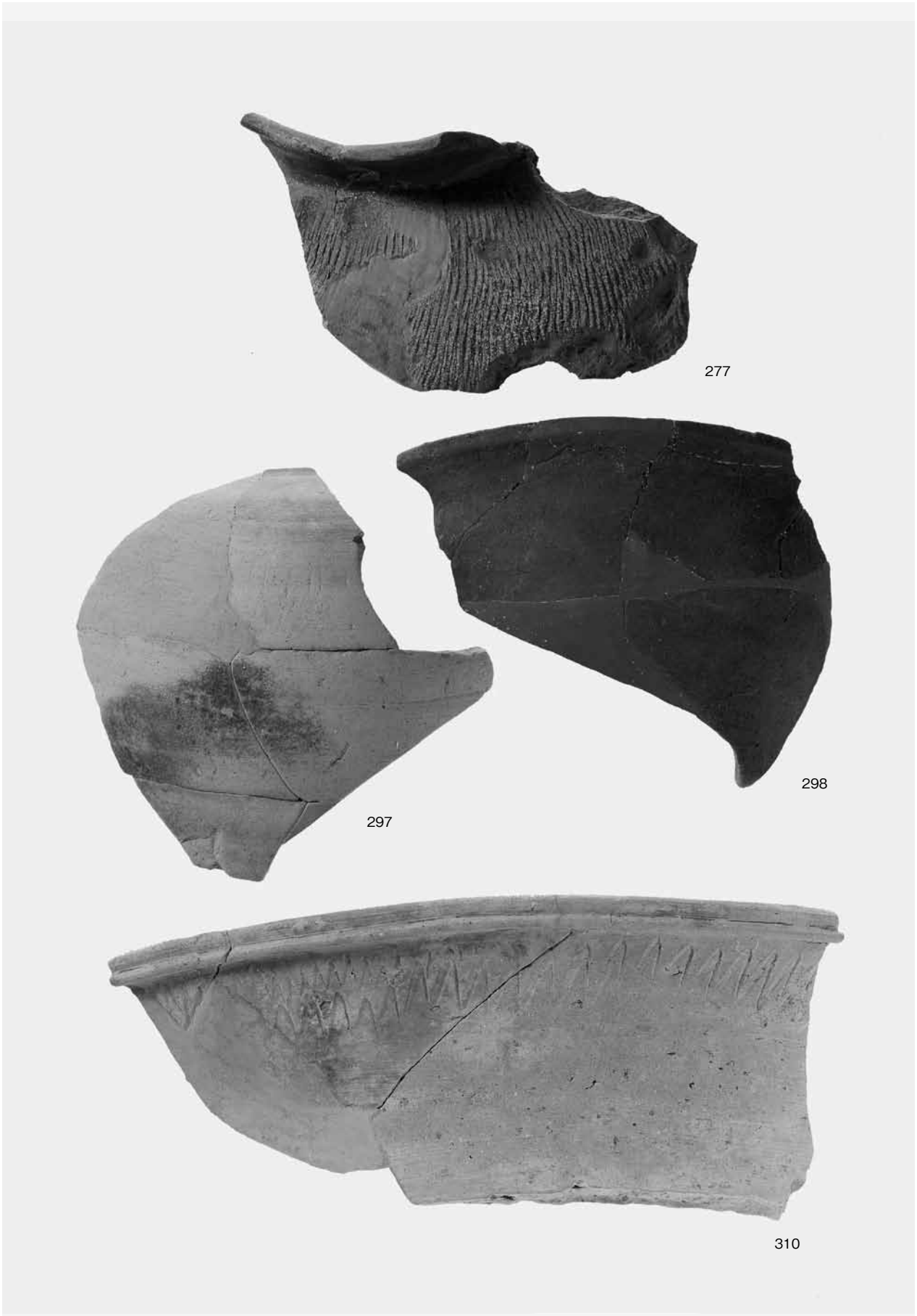


窯3上層出土須惠器杯皿類





窯3出土須恵器杯皿類



窯3出土須惠器瓶壺甕類