



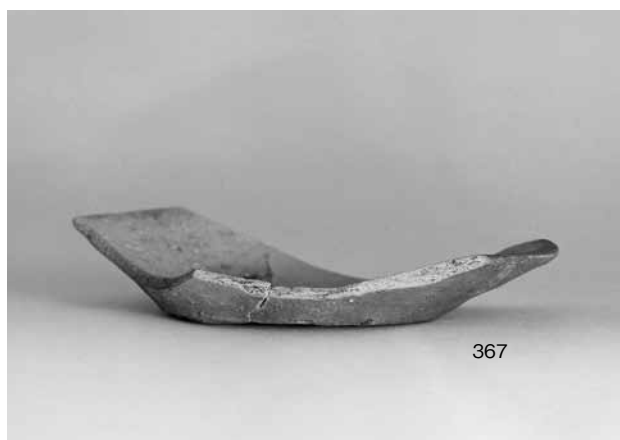
1 窯3出土須恵器甕



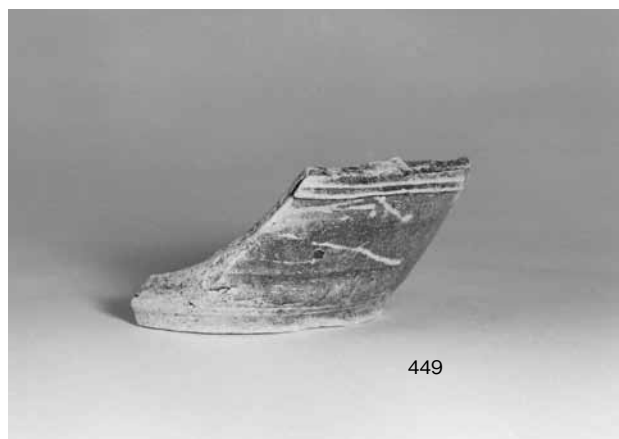
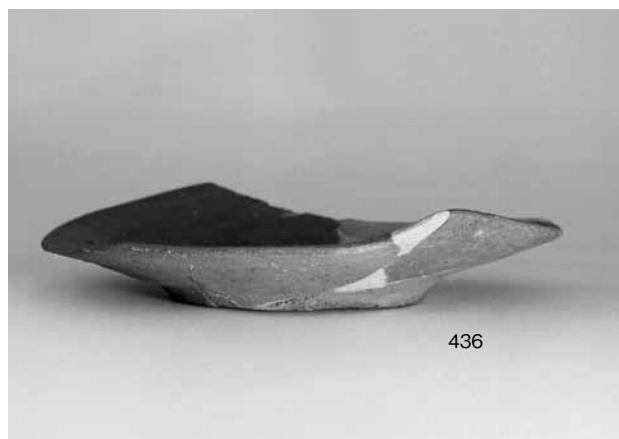
2 窯3・灰原1出土須恵器杯類



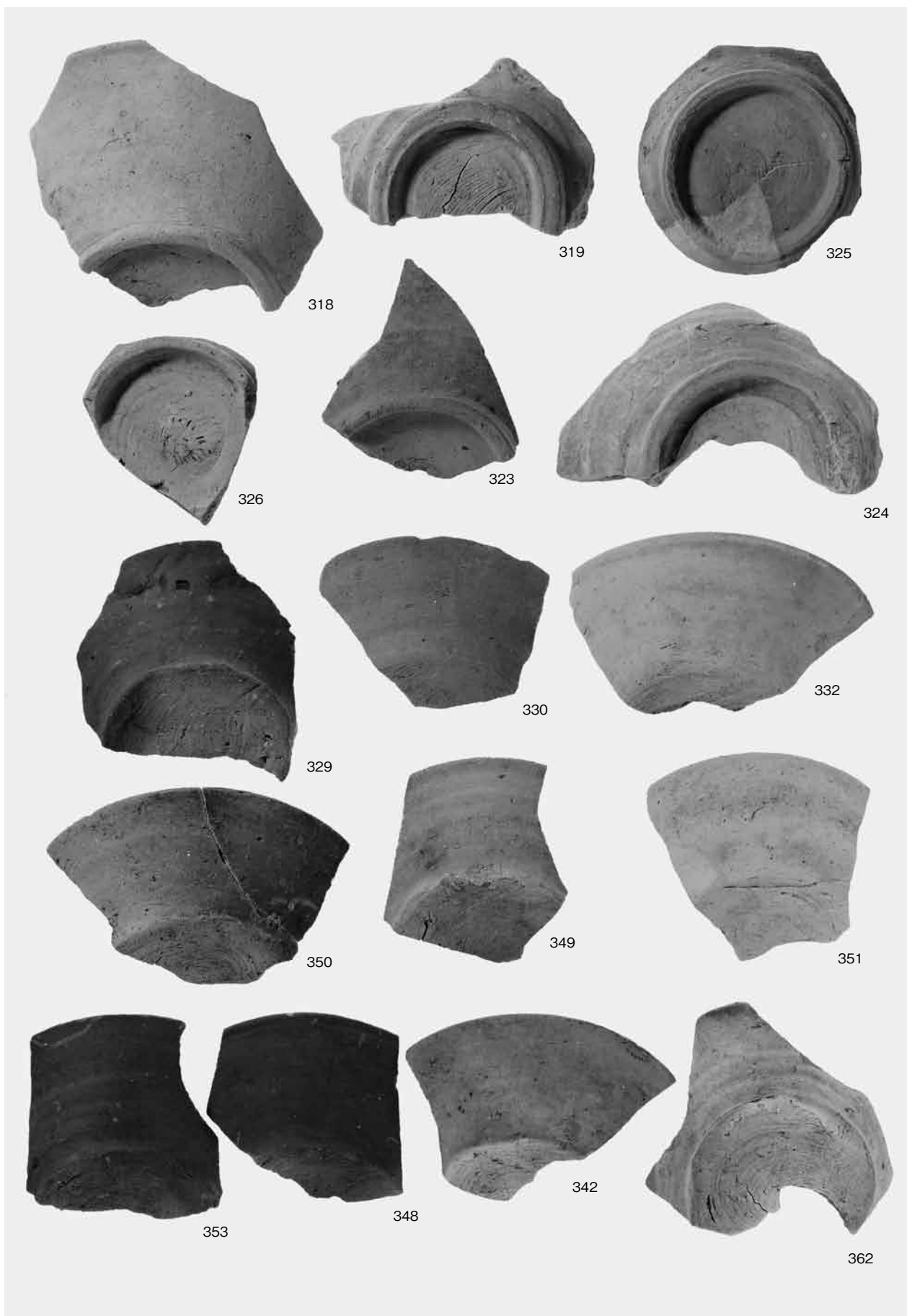
灰原 1 出土須恵器杯類



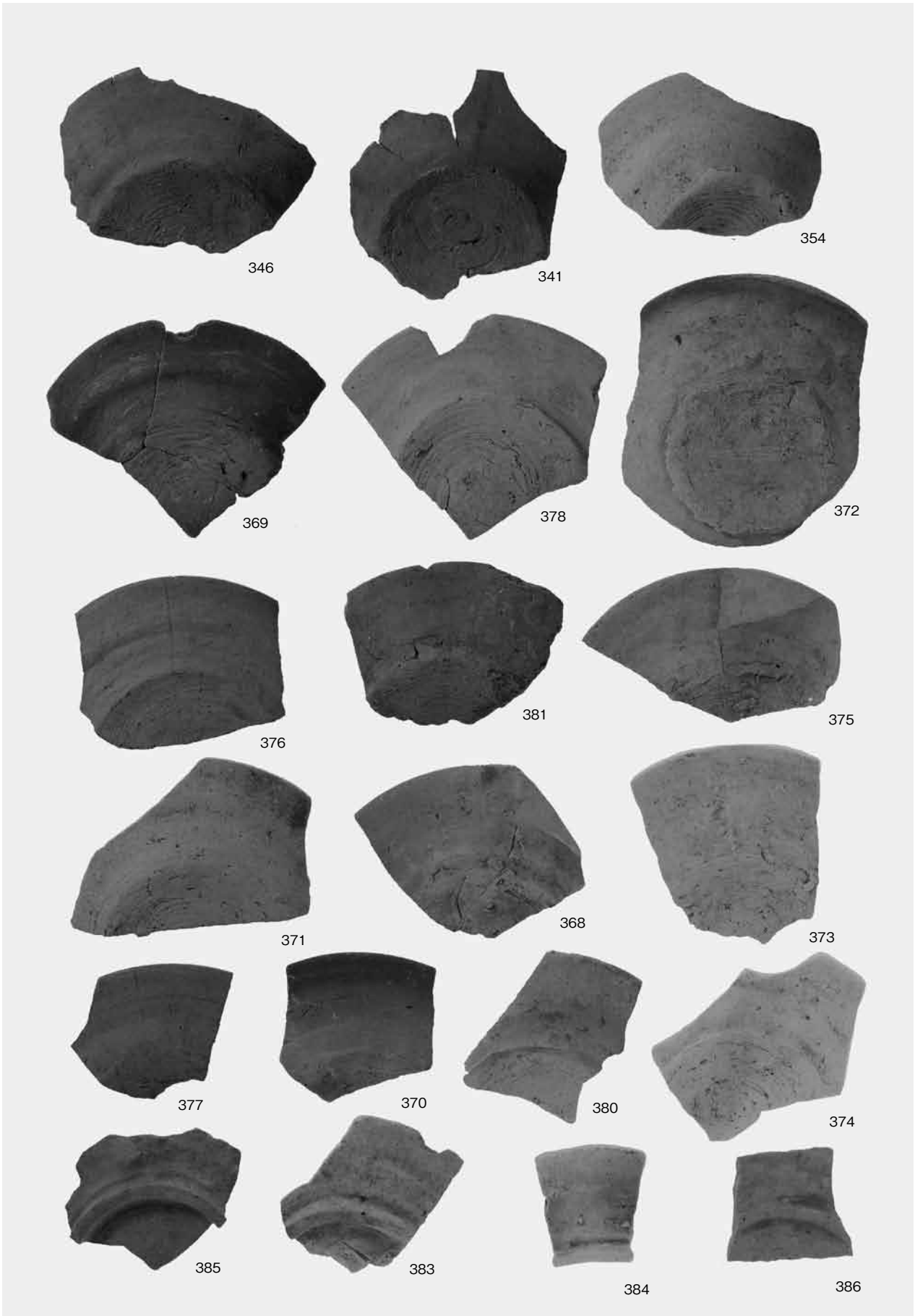
灰原 1 出土須恵器杯・皿・水瓶



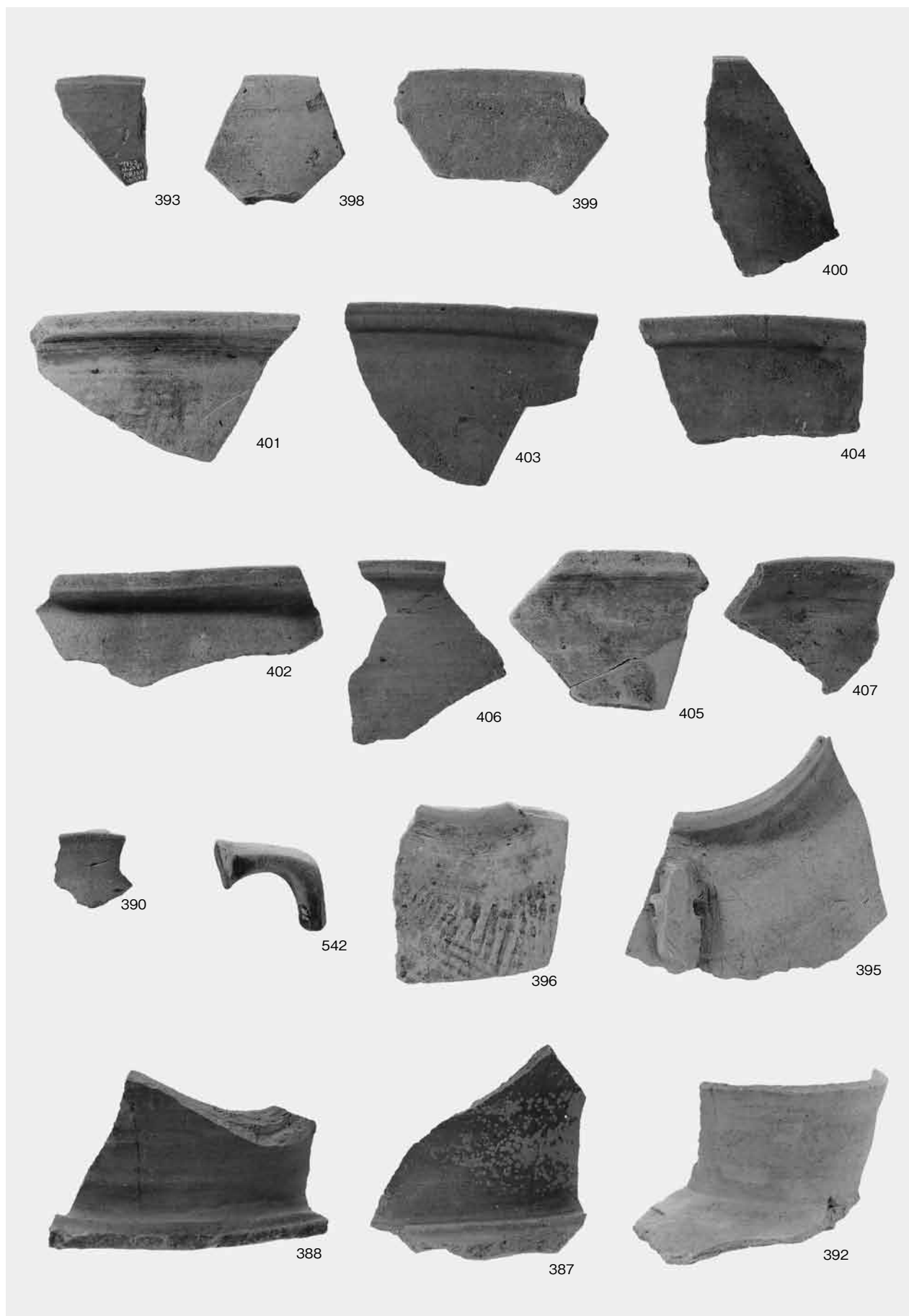
灰原1・2出土須恵器杯皿類・長頸壺



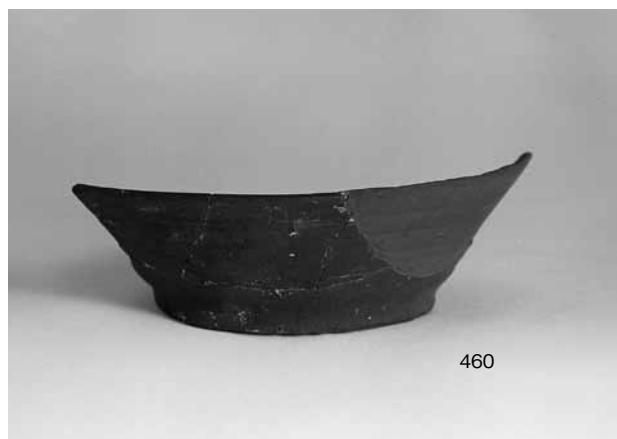
灰原 1 出土須恵器杯



灰原 1 出土須惠器杯皿類

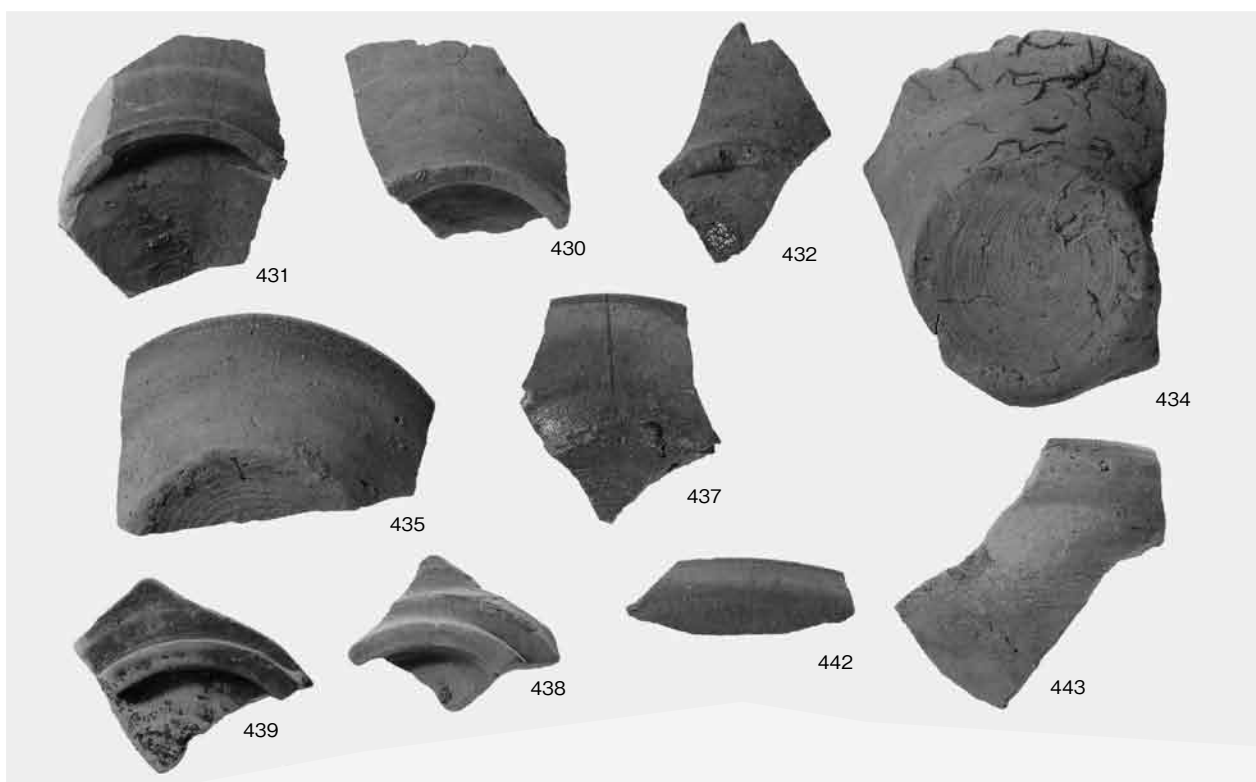


灰原 1 出土須惠器鉢・壺・瓶類

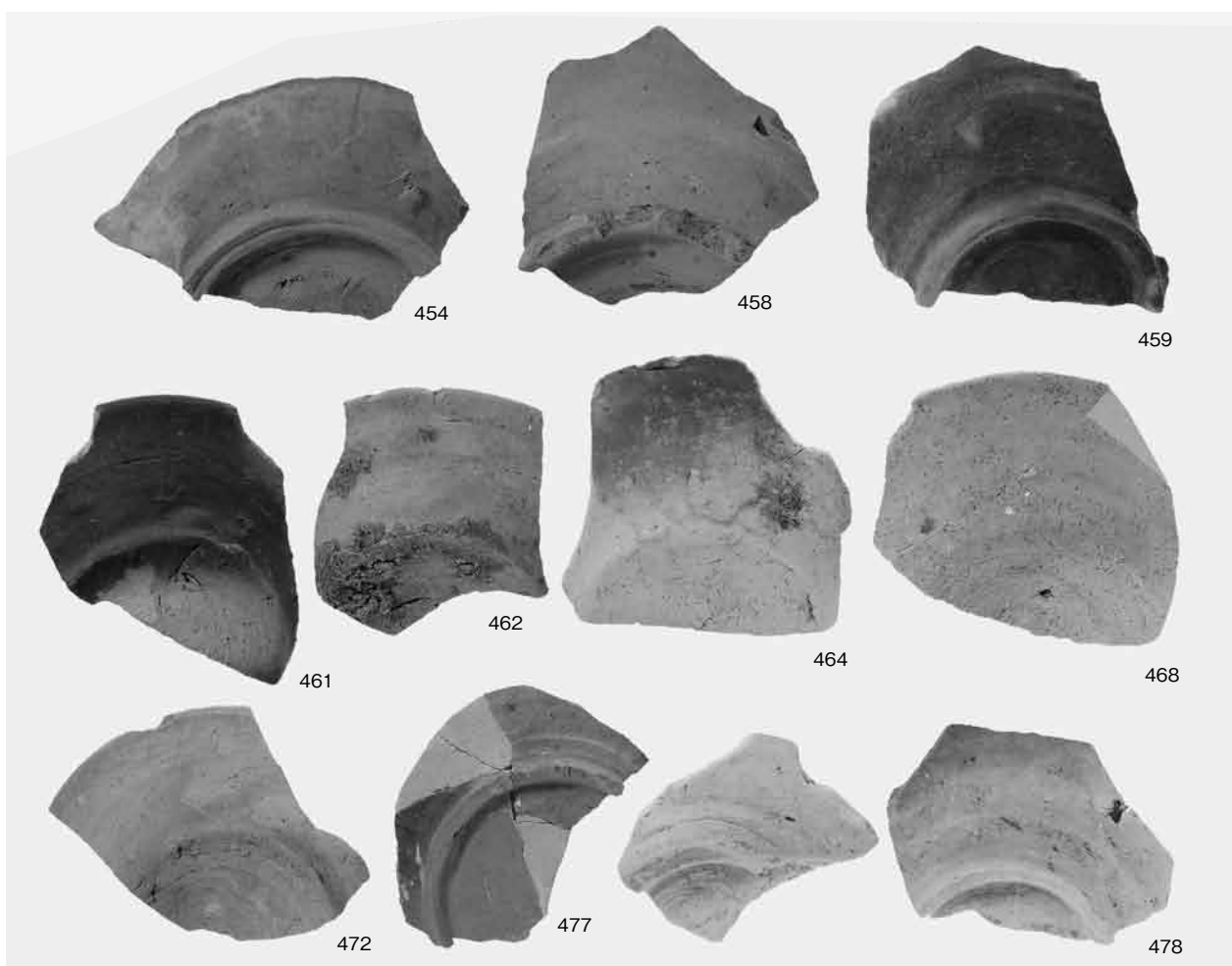


灰原2・3出土須恵器杯皿類

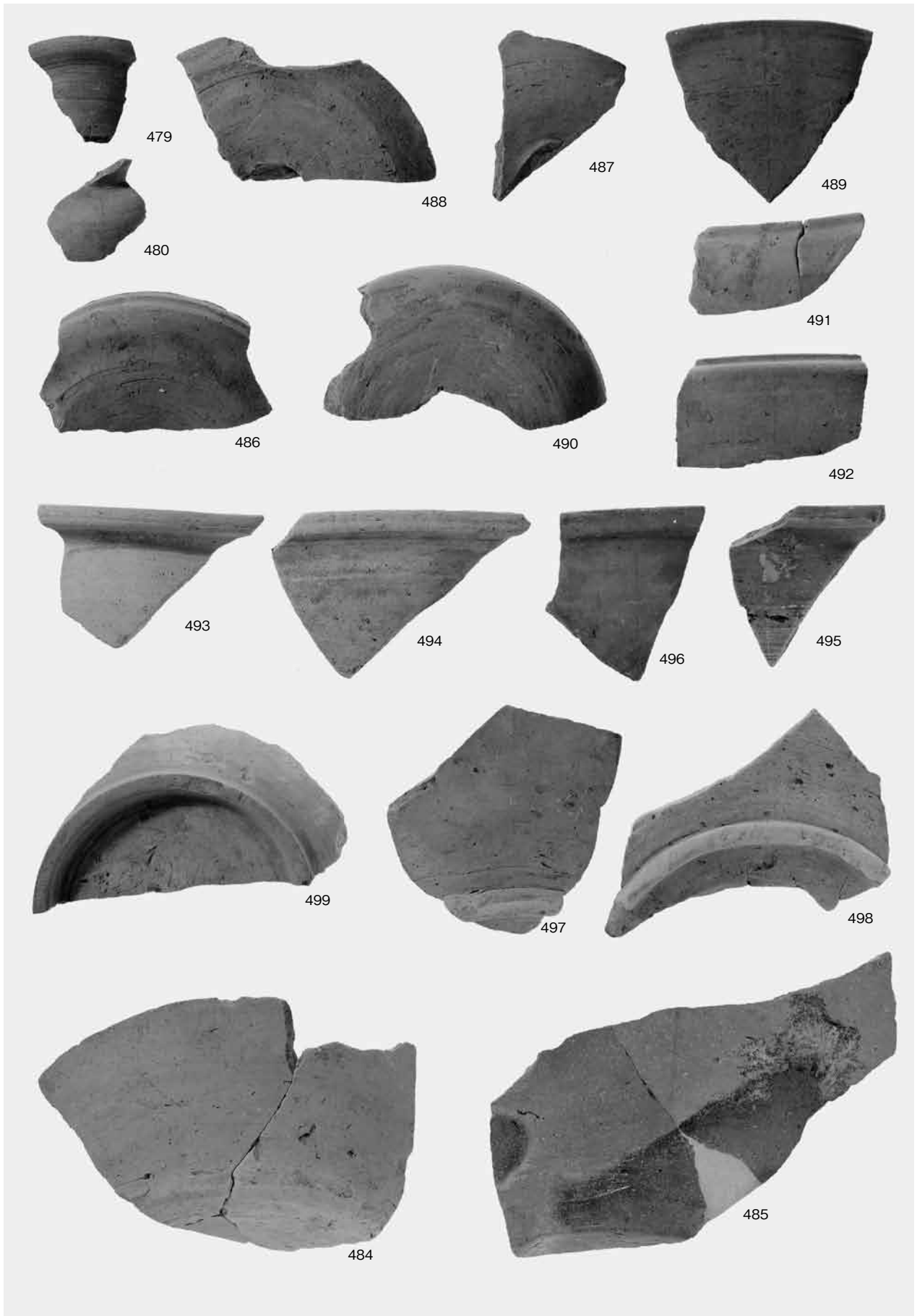




1 灰原2出土須恵器杯皿類・鉢



2 灰原3出土須恵器杯皿類



灰原3出土須恵器蓋・鉢・壺類



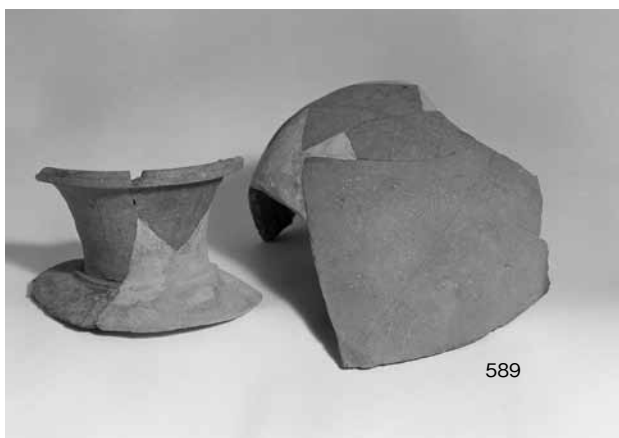
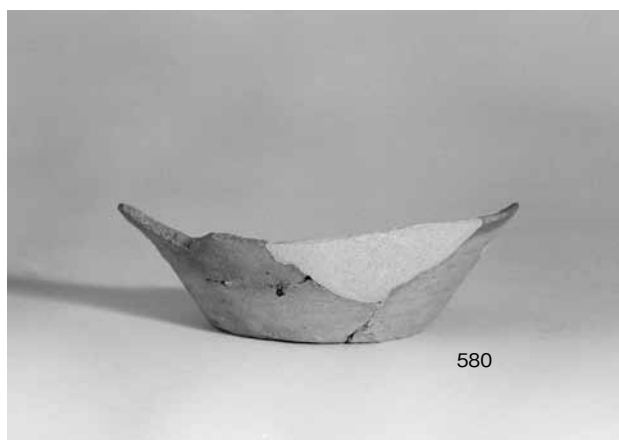
1 灰原出土須恵器皿・壺類・瓶類



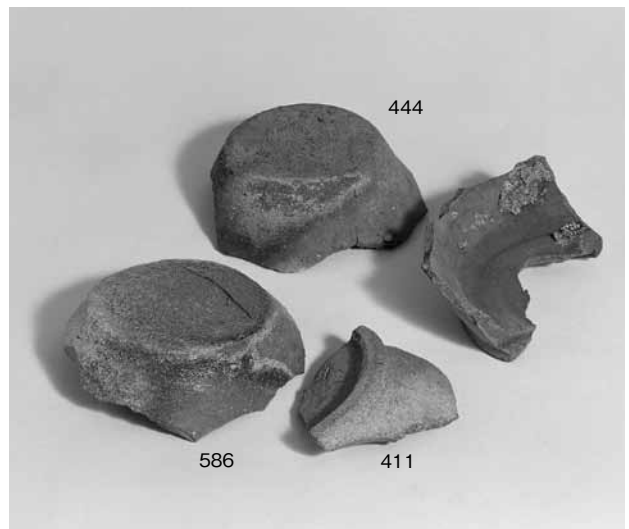
1 灰原出土須恵器甕(1)



2 灰原出土須恵器甕(2)

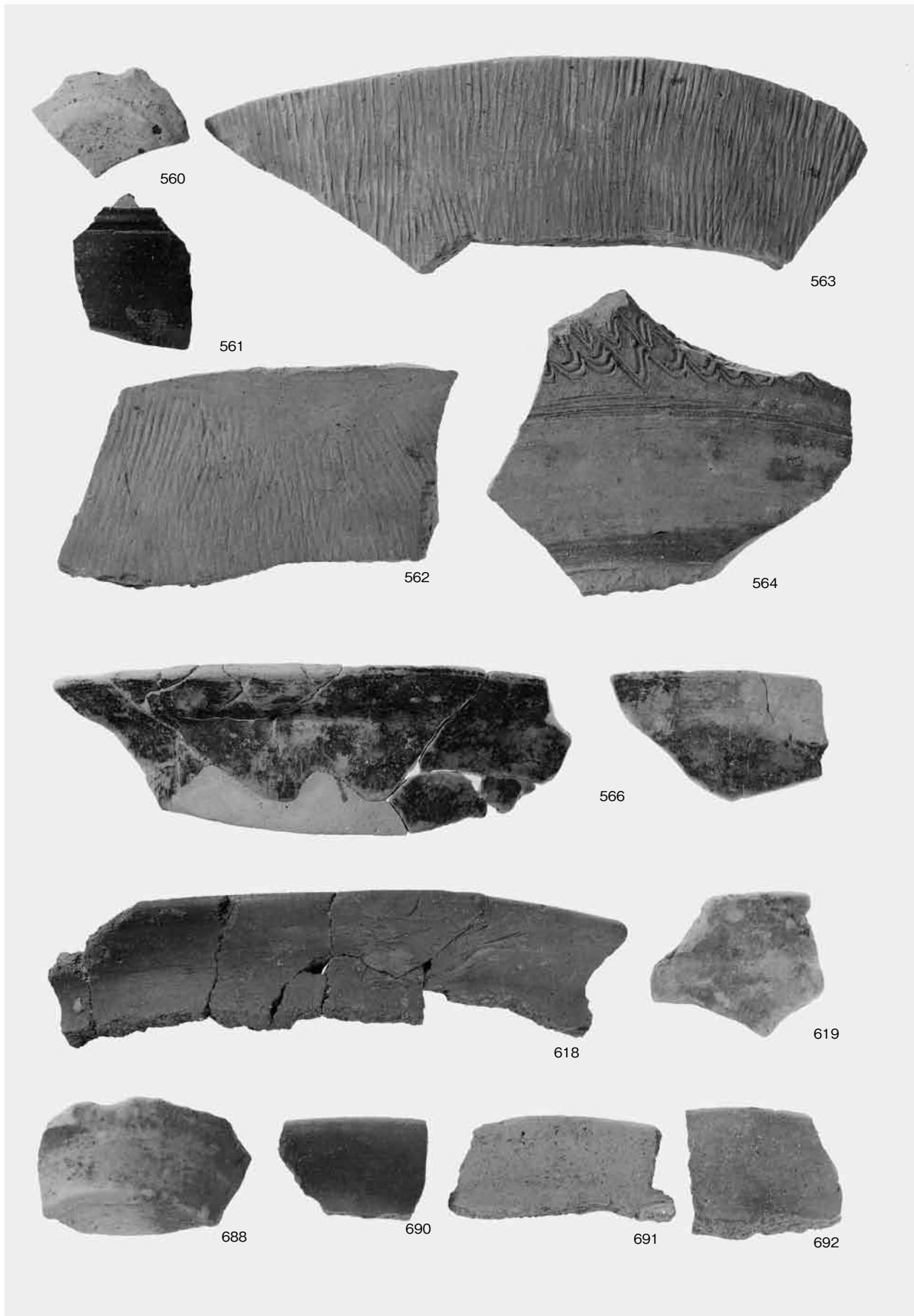


排滓場 1・2 出土須恵器

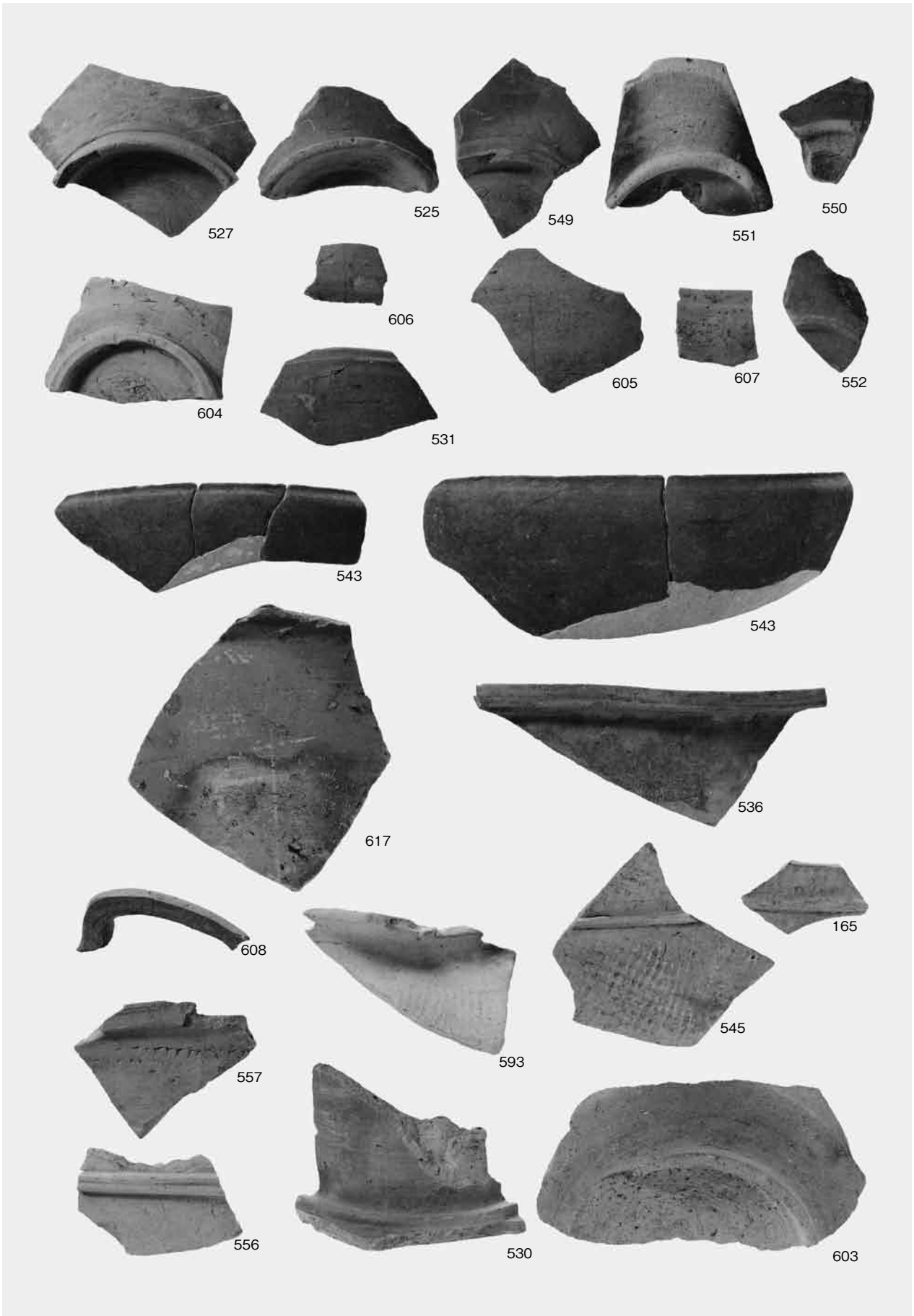


1 古代流路・遺構外出土須恵器

2 灰原出土須恵器杯類転用烧台

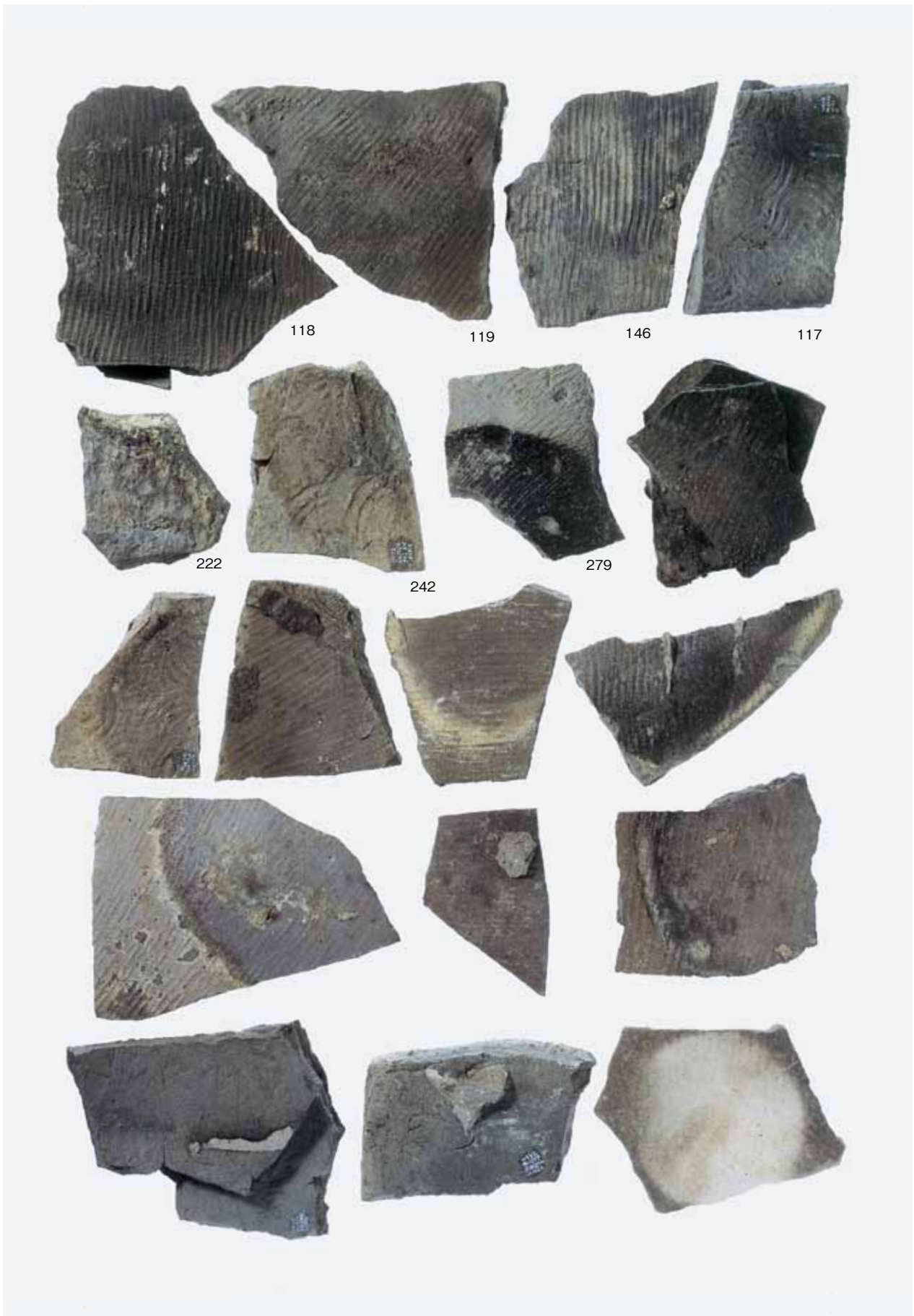


製鉄炉・排滓場2・炭焼窯14出土須恵器、土師器

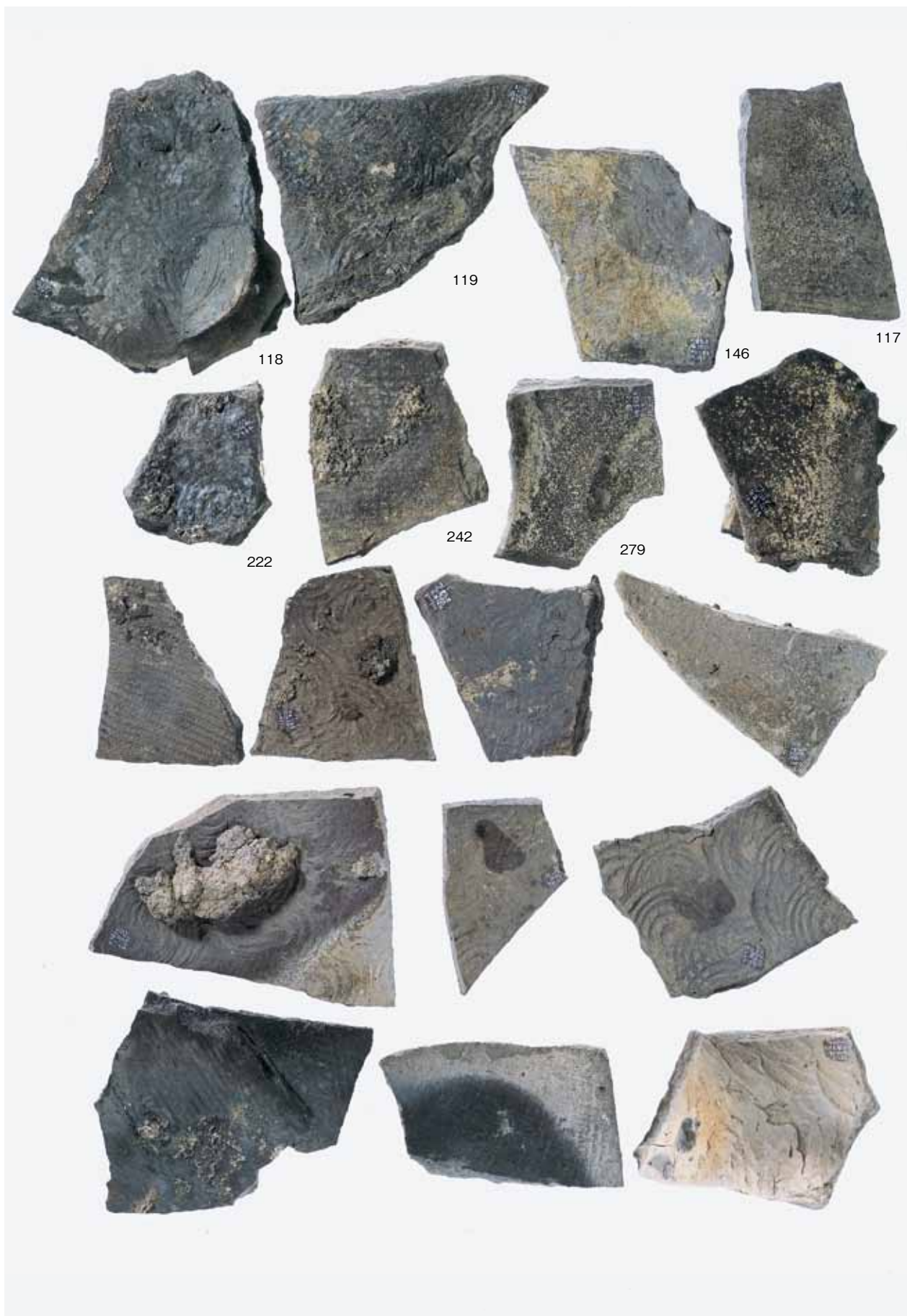


1区遺構外出土須恵器





須恵器転用焼台(表面)



須惠器転用烧台(裏面)