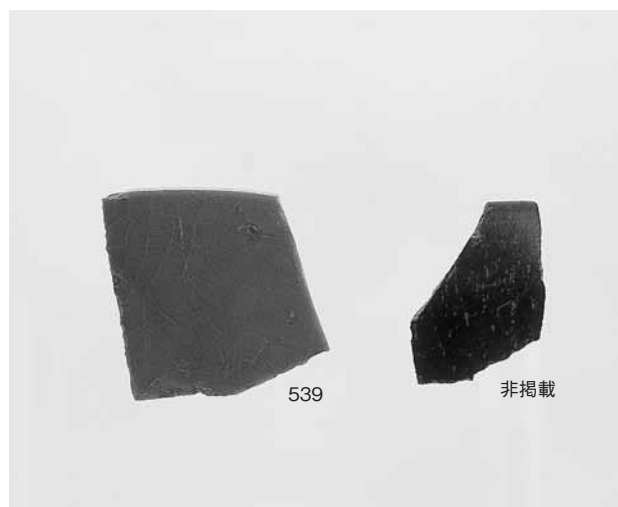




549

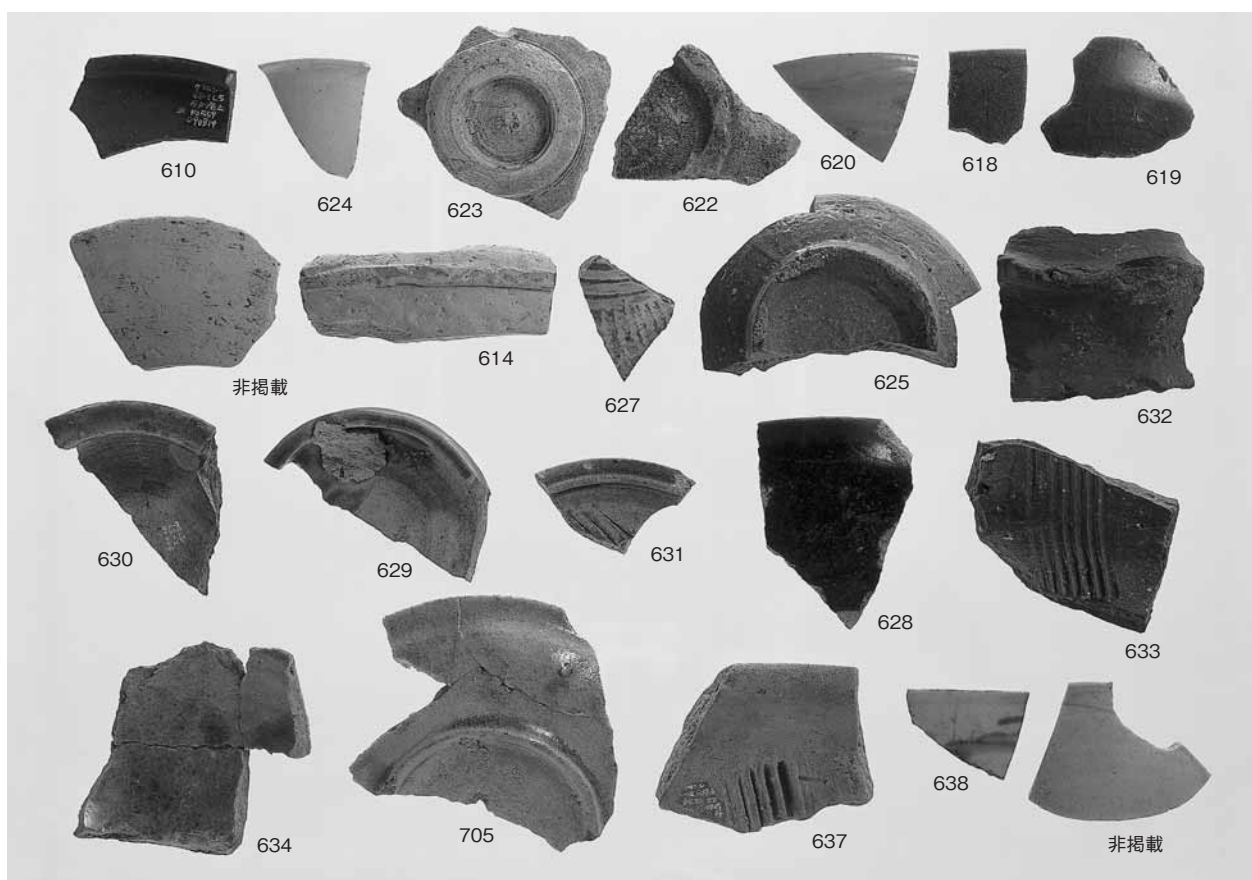
1 3区近世以降遺物包含層(灰褐色土)出土土師質土器坏



539

非掲載

2 1区整地土出土陶磁器



610

624

623

622

620

618

619

非掲載

614

627

625

632

630

629

631

628

633

634

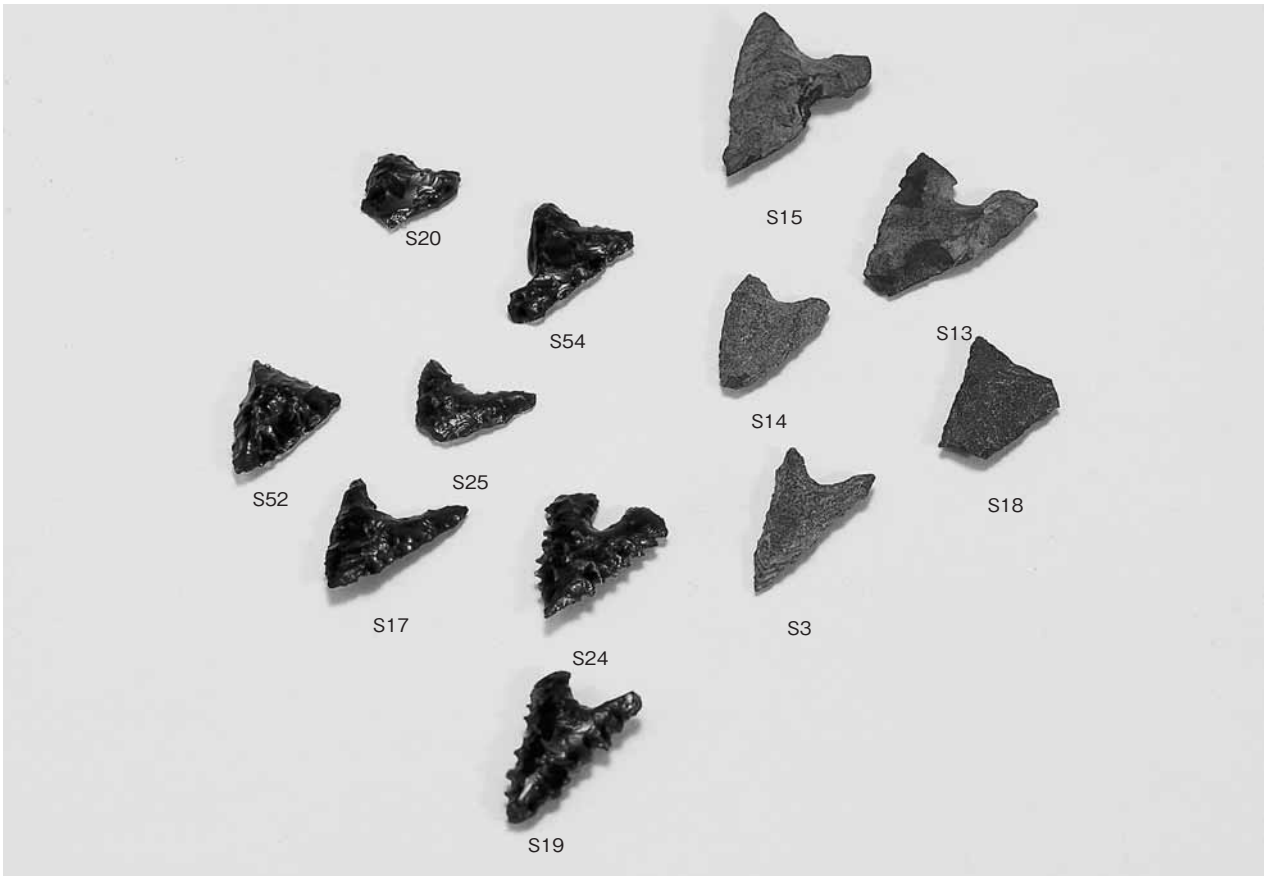
705

637

638

非掲載

3 4区近世以降遺物包含層(灰褐色土)出土陶磁器



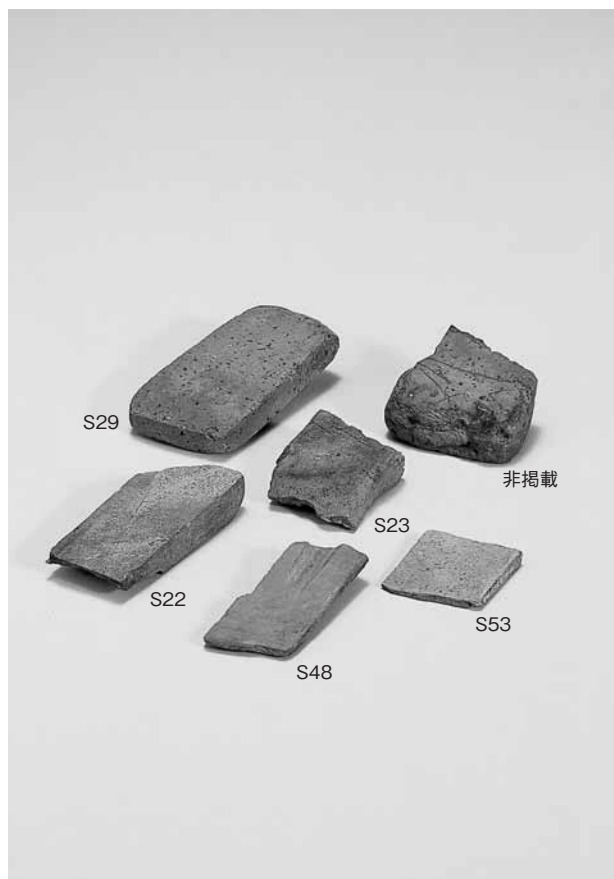
1 石鏃



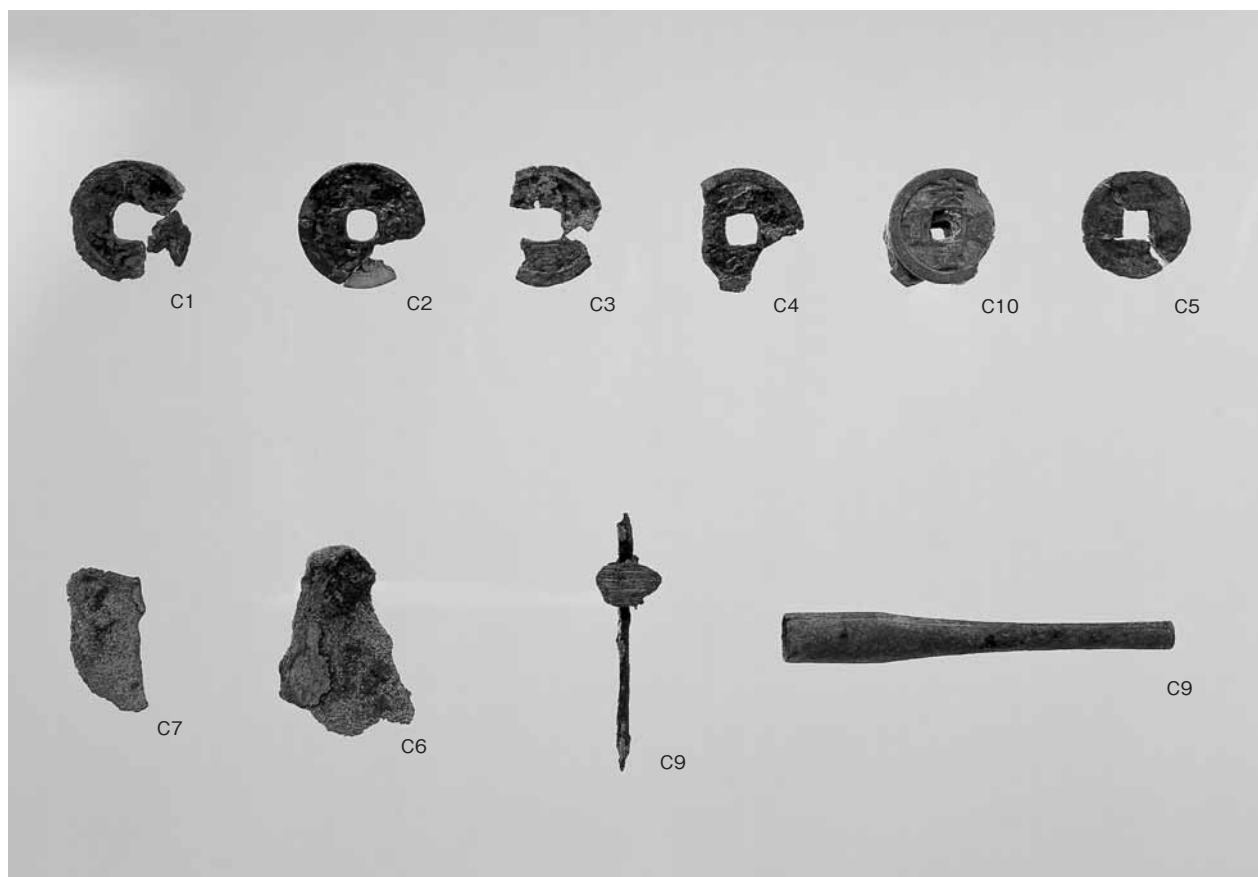
2 薄片石器



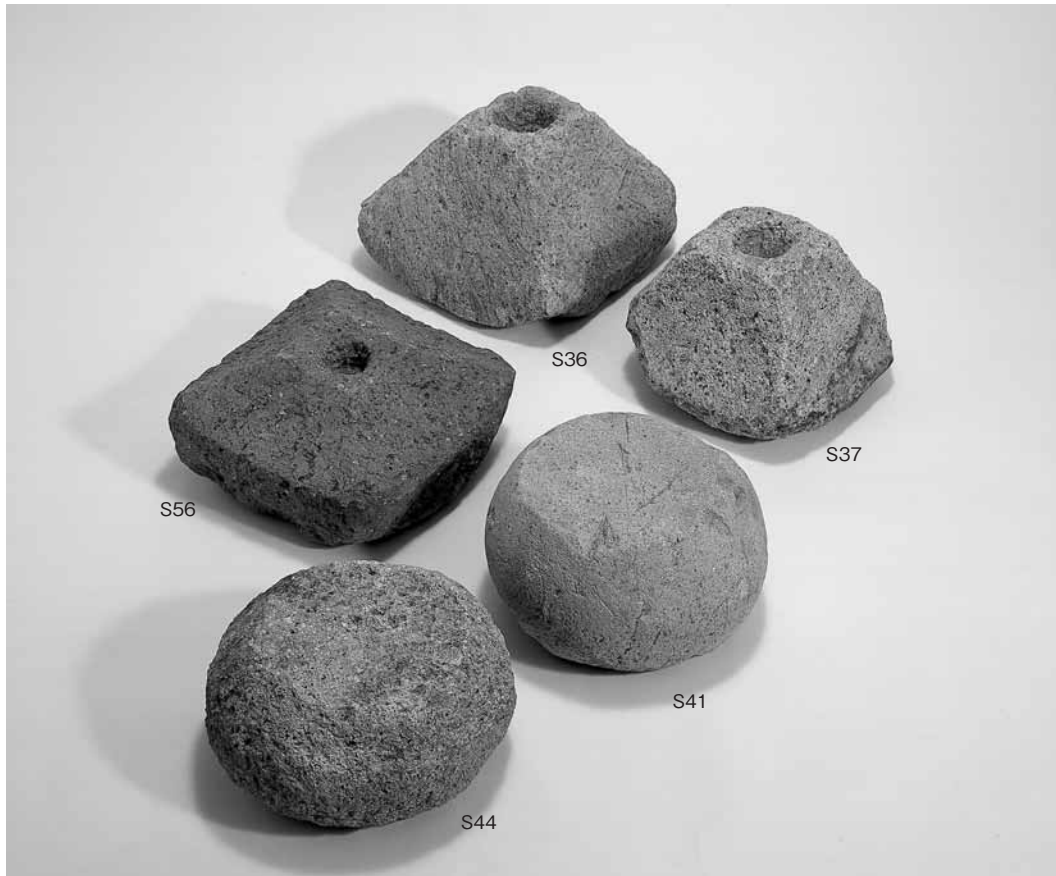
1 敲石



2 砥石



3 銅製品

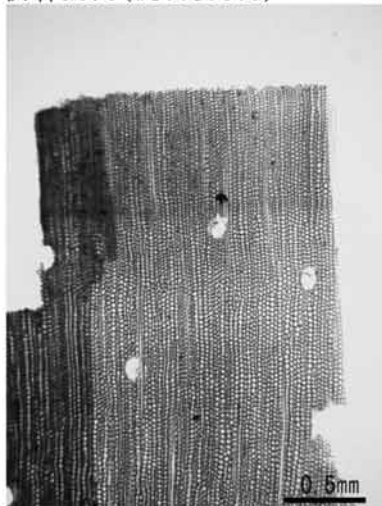


1 4区出土五輪塔(1)

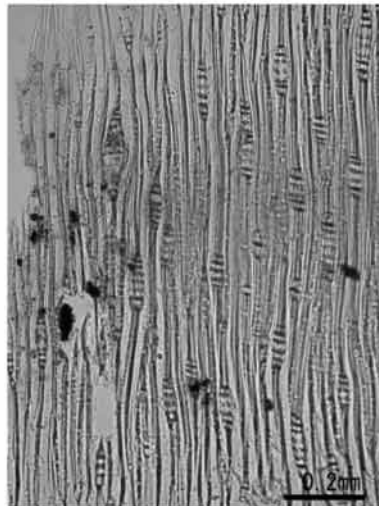


2 4区出土五輪塔(2)

マツ属 (複維管束亜属) *Pinus* (sub. *Diploxylon*) sp.
 試料No. 3 (W10010603)



横断面

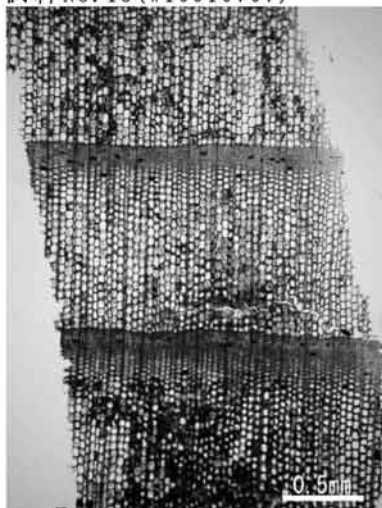


接線断面

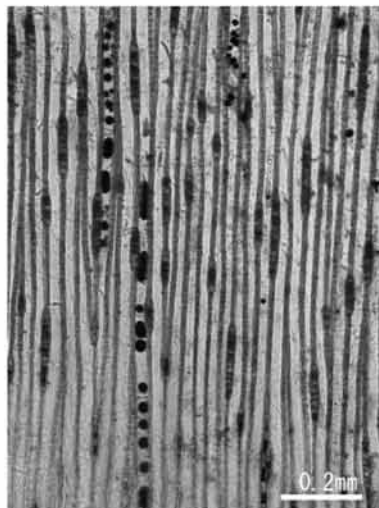


放射断面

スギ *Cryptomeria japonica* D. Don
 試料No. 15 (W10010707)



横断面

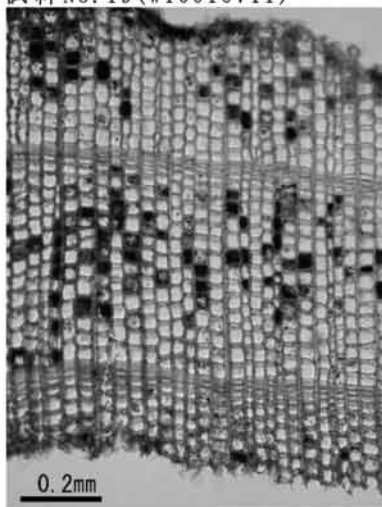


接線断面

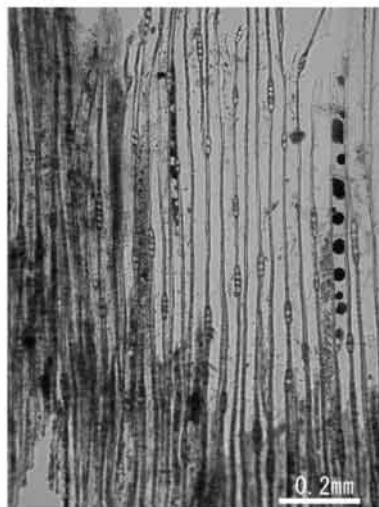


放射断面

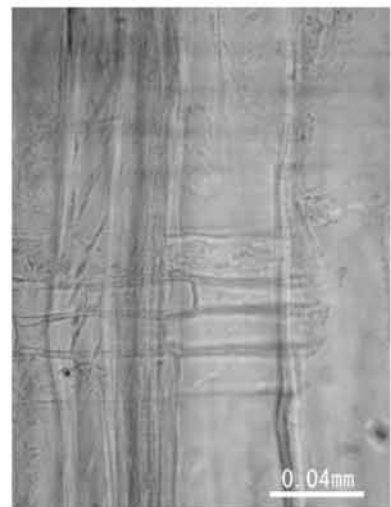
ヒノキ属 *Chamaecyparis* sp.
 試料No. 19 (W10010711)



横断面



接線断面



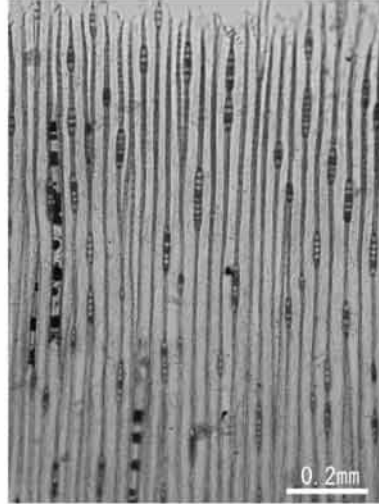
放射断面

樹種同定(1)

ヒノキ属? cf. *Chamaecyparis*
試料 No. 1 (W10010601)



横断面

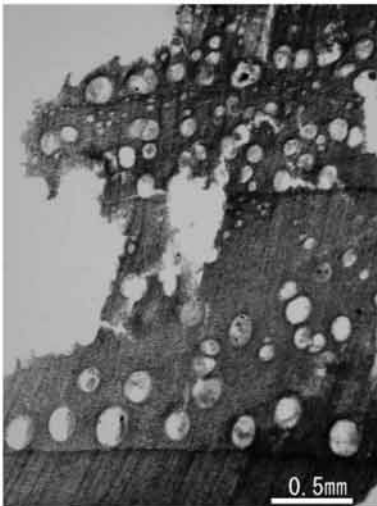


接線断面

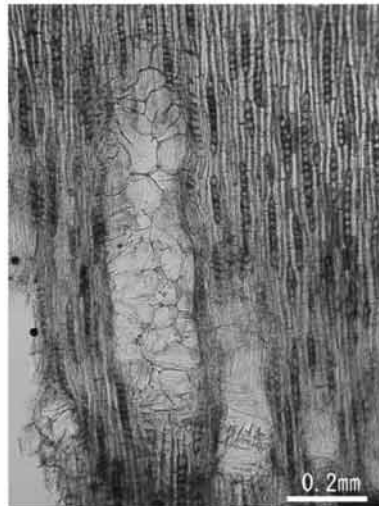


放射断面

クリ *Castanea crenata* Sieb. et Zucc.
試料 No. 5 (W10010605)



横断面

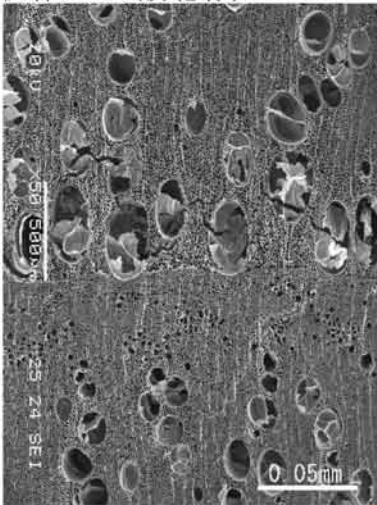


接線断面

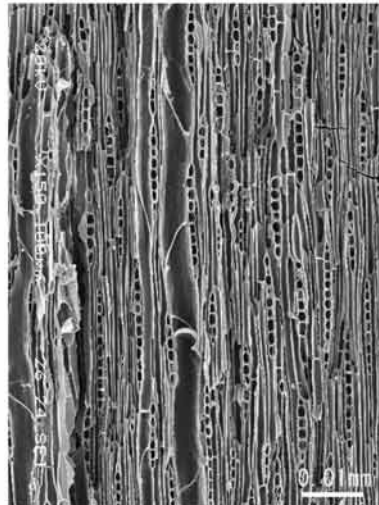


放射断面

クリ *Castanea crenata* Sieb. et Zucc.
試料 No. 26 (炭化材)



横断面

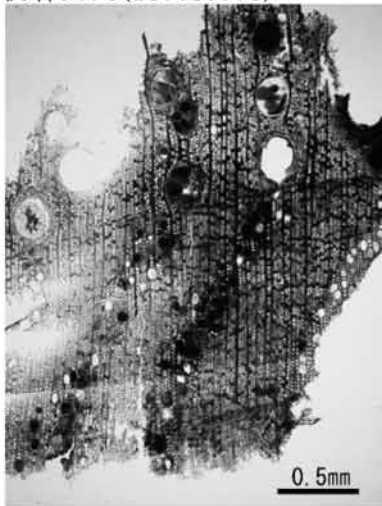


接線断面

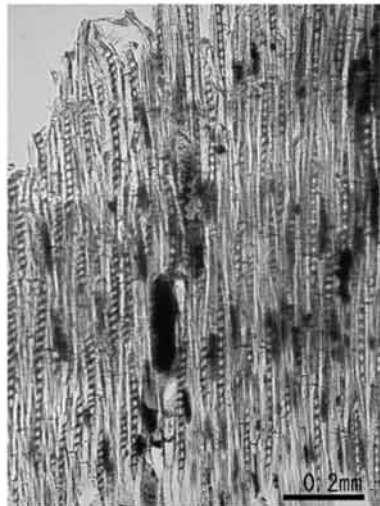


放射断面

スタジイ *Castanopsis cuspidata* Schottky var. *sieboldii* Nakai
 試料No. 4 (W10010604)



横断面

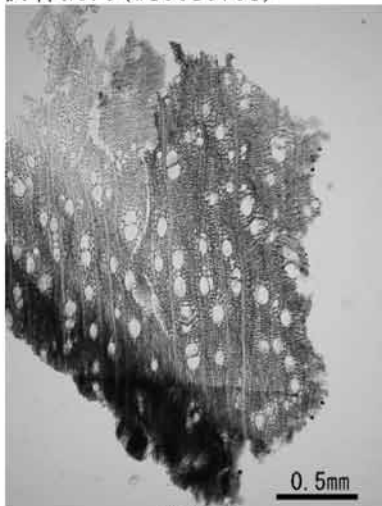


接線断面

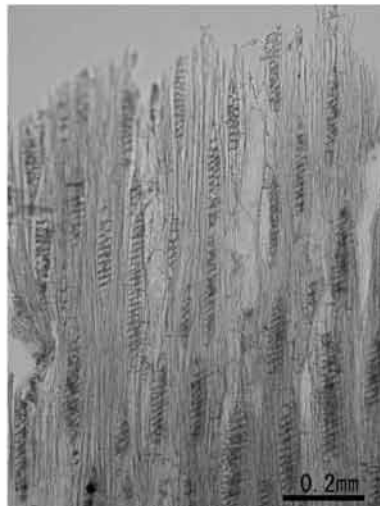


放射断面

クスノキ属 *Cinnamomum* sp.
 試料No. 9 (W10010701)



横断面

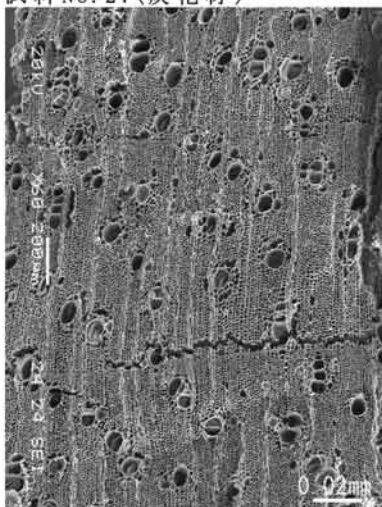


接線断面

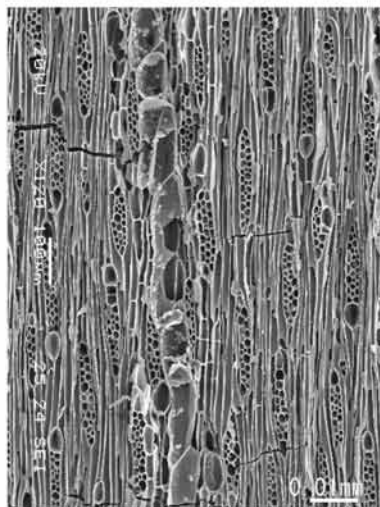


放射断面

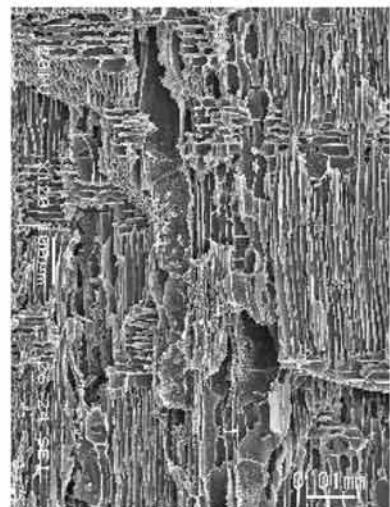
クスノキ科 Lauraceae
 試料No. 27 (炭化材)



横断面

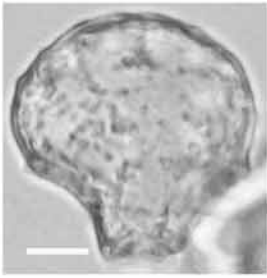


接線断面

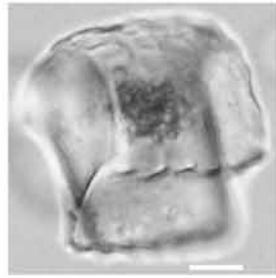


放射断面

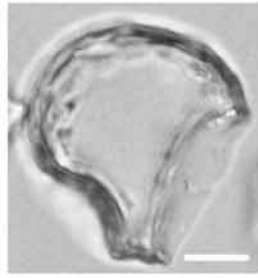
樹種同定(3)



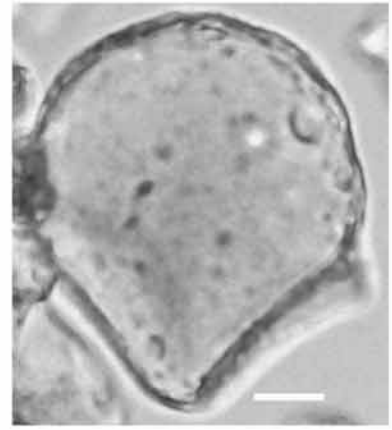
イネ



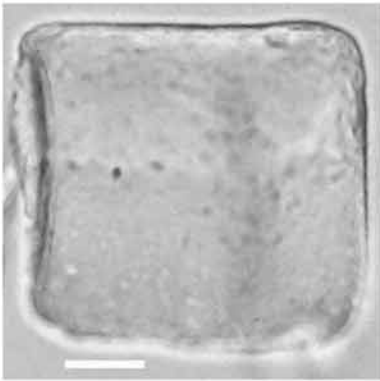
イネ



イネ



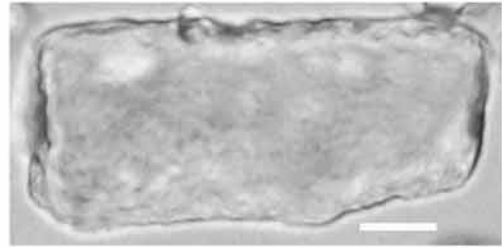
ヨシ属



ススキ属型



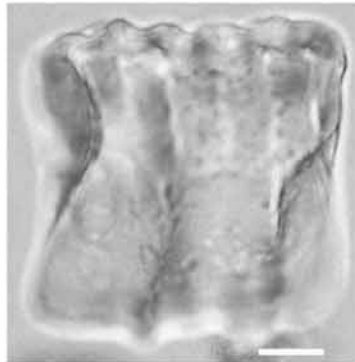
ススキ属型



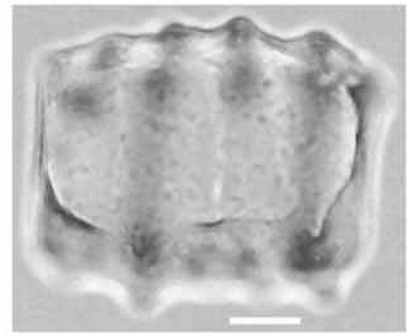
キビ族型



メダケ節型



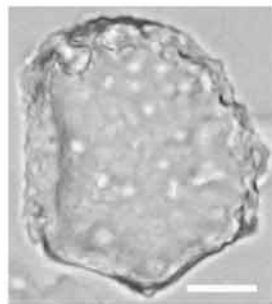
ネザサ節型



ネザサ節型



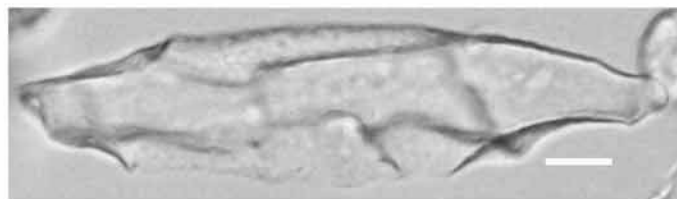
チマキザサ節型



ミヤコザサ節型



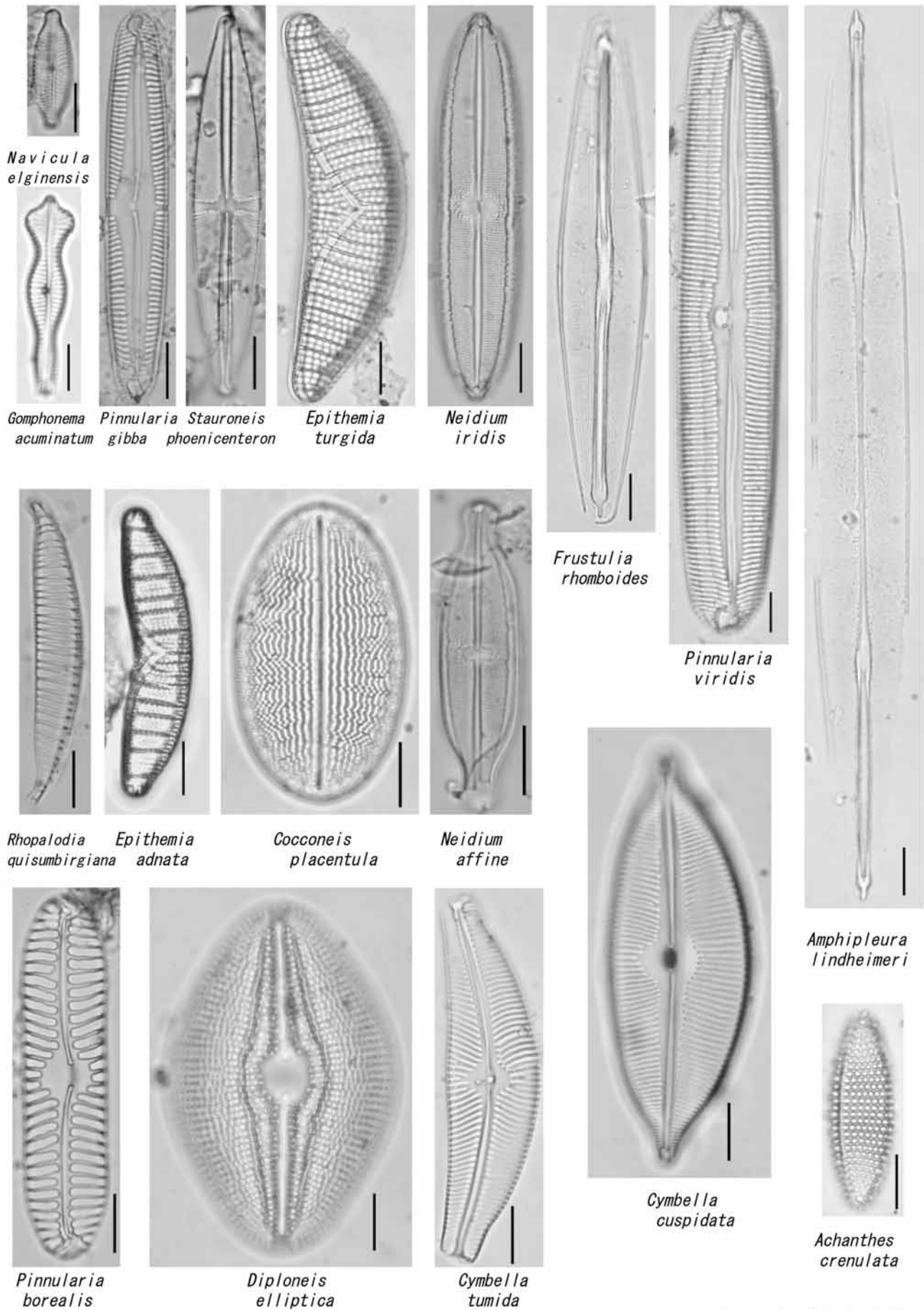
ミヤコザサ節型



クスノキ科

植物珪酸体化石

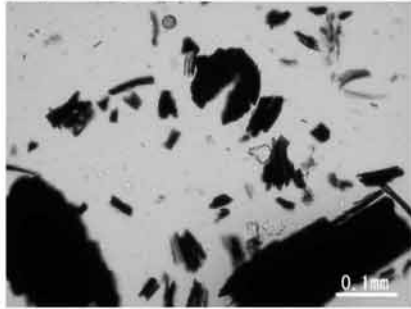
スケールバーはすべて0.01mm



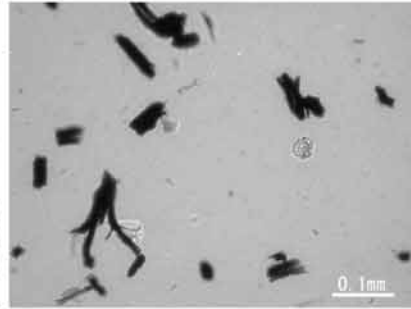
スケールバーはすべて0.01mm

珪藻化石

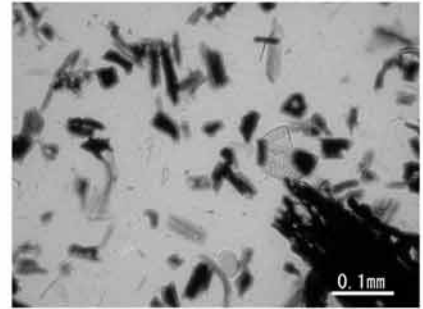
花粉化石含有状況



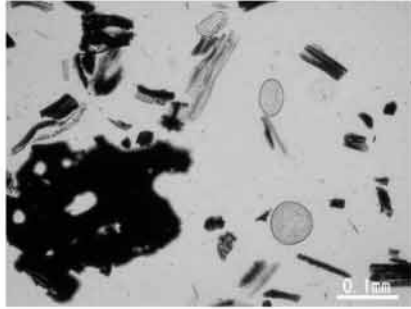
試料No.1



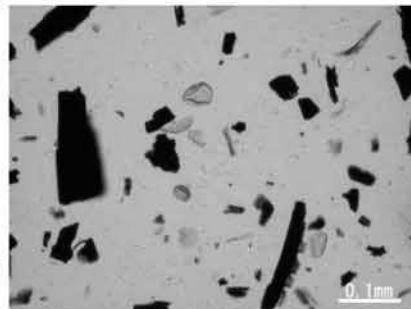
試料No.3



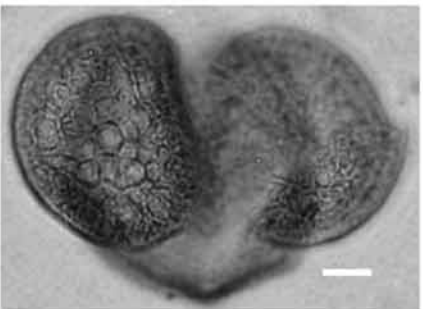
試料No.4



試料No.5



試料No.11



マツ属(複維管束亜属)



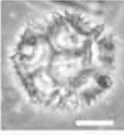
コナラ亜属



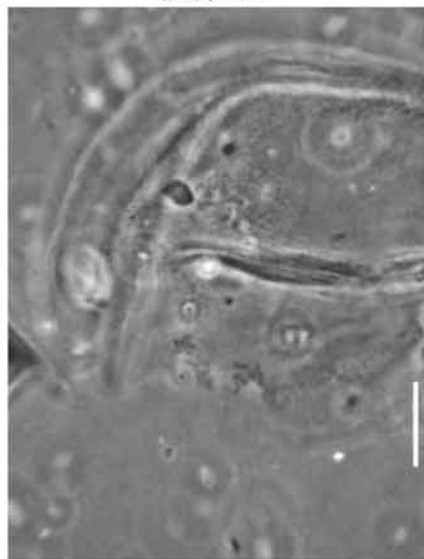
アブラナ科



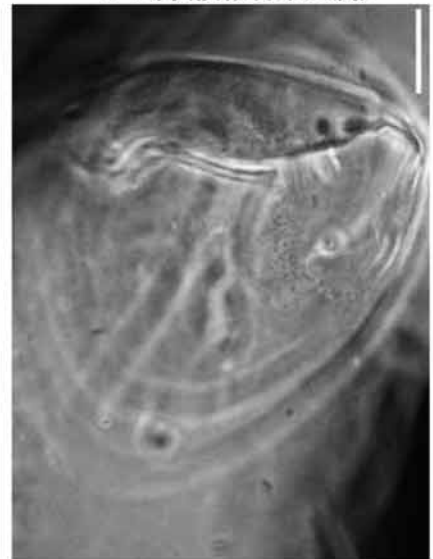
イノモトソウ属



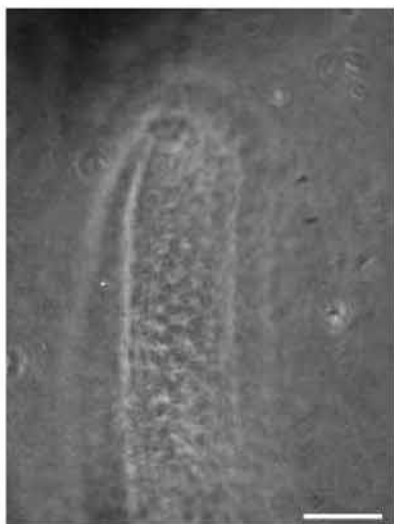
タンポポ科



イネ属型



イネ属型



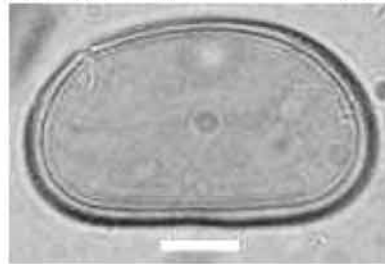
ソバ属



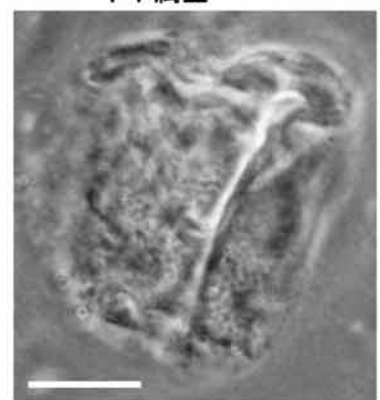
アカザ科-ヒユ科



ヨモギ属



オシダ科-チャセンシダ科



イネ科

スケールバーはすべて0.01mm

花粉化石含有状況